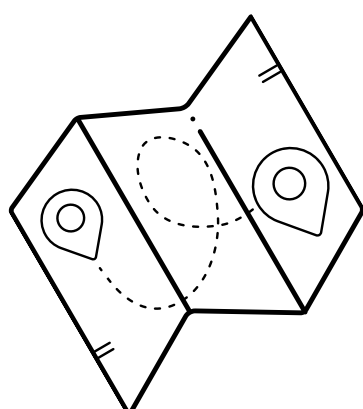
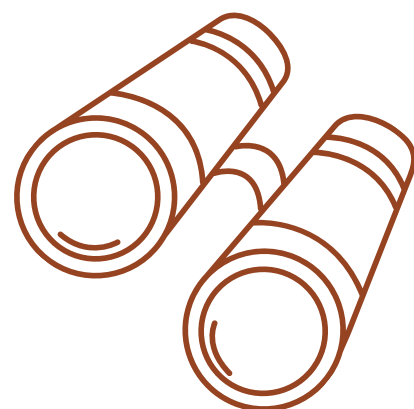
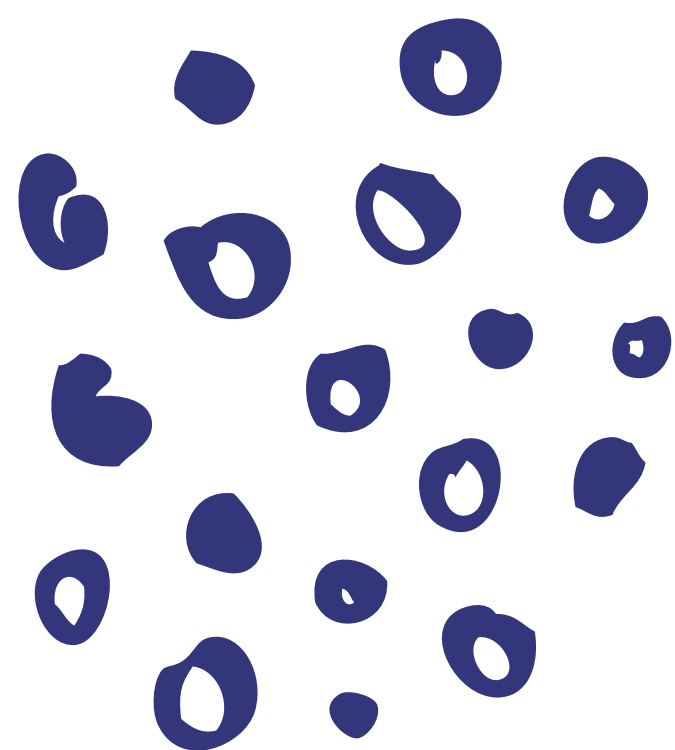
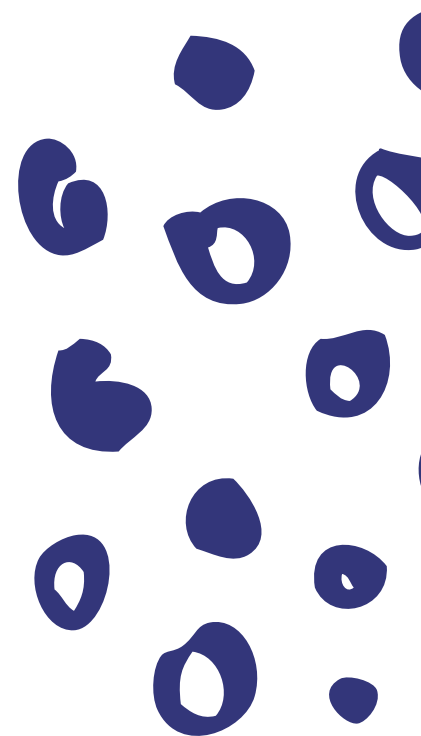
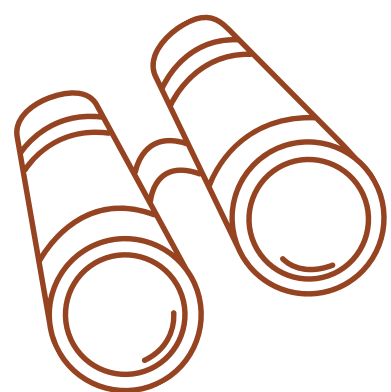
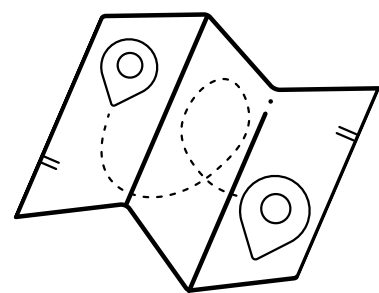


THE GUESTBOOK'S GUIDE TO..

# HORT PARK

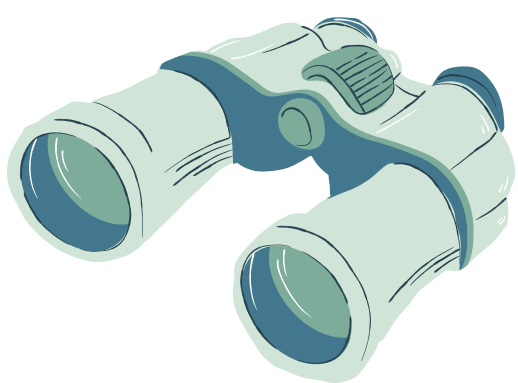
FOR THE MOST ADVENTUROUS YOUNG EXPLORERS...



# WHAT'S INSIDE

HERE'S YOUR JAM-PACKED GUIDE FOR EXPLORING HORT PARK! THERE'S LOTS TO DO BEFORE IT GETS DARK. GET GOING FIRST WITH THE EXPLORER CHECKLIST, HOPEFULLY THERE'S NOTHING YOU HAVE MISSED! THEN HAVE A READ OF THE DID YOU KNOW, AND TRY THE QUIZ - READY, STEADY, GO!

THIS PACK INCLUDES...



PARK QUIZ



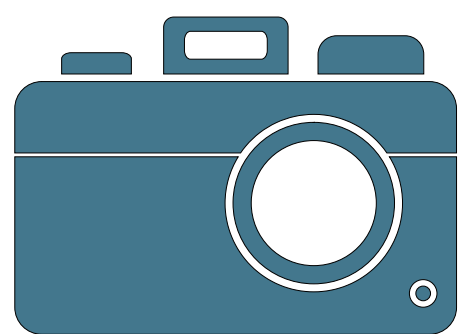
DID YOU KNOW



PLAN YOUR TRIP



EXPLORER CHECKLIST



SPECIAL PROJECTS



PARK POEM



DID YOU KNOW?

HORT PARK IS 10 HECTARES - THAT'S THE SAME SIZE AS 18 FOOTBALL PITCHES!



# ALL THE INFO...

Planning your trip (one for the grown ups!)



## GETTING THERE

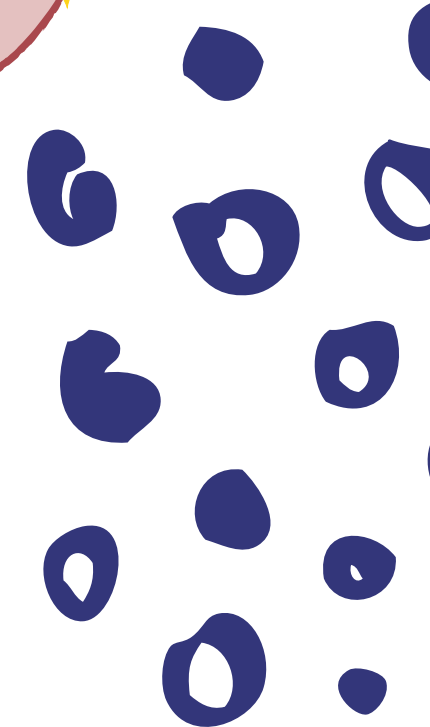
The nearest MRT is **Labrador Park**, a 10 minute walk from the Park entrance. There's also plenty of buses that stop right outside the main entrance. Parking is also available.

## FOOD & DRINK

In the park there's only one option, **Vineyard**, a lovely restaurant near the main entrance.

Note it's only open after 12pm on weekends and closed if there's a function. **Gillman Barracks** is just across the road and has the best ice cream (**Creamier**), or more substantial food options (**Handlebar**). The latter serves up American style dishes in a biker themed restaurant making it a little bit different too!

There's also the **ARC Retail Centre** close by with a Fair Price, a range of food outlets, as well as fast food options. The closest Hawker Centre is Alexandra Food Centre, but there's some hidden gems along Pasir Panjang Road too which is only a short stroll away. For more food options - check out the [dedicated pages](#) on our website.



## OPENING TIMES

Hort Park is open daily from 6am - 11pm. It gets hot, so we recommend going first thing to have the park and play zones to yourself and avoid the heat. Alternatively, it's great to explore later in the day after the midday sun.

## TOP TIPS



As with most outdoorsy places, come prepared with sunscreen and insect repellent. If you do opt for a picnic then there's a grassy area at the start (near the main entrance), or towards the end of the park (Kent Ridge end).

There are also several benches dotted throughout the park.



## OTHER FACILITIES

The Park is well equipped with two sets of toilets at each end, as well as water fountains. There's also an information centre (check opening hours in advance), and babychanging facilities here.



## DID YOU KNOW?

HORT PARK HAS BEE HOTELS AND A DEDICATED BEE TRAIL  
WITH OVER 20 TYPES OF BEE!

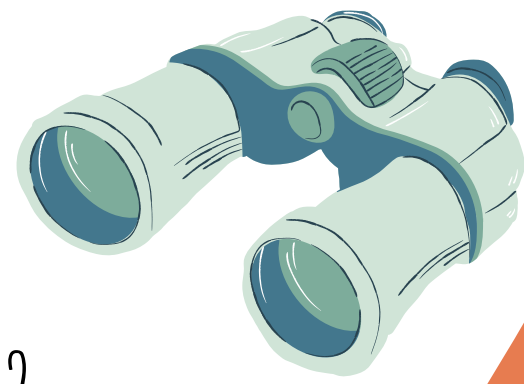






# EXPLORER CHECKLIST

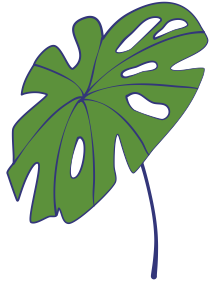
HOW MANY ITEMS CAN YOU FIND?



☐ BALINESE GARDEN



☐ BEES



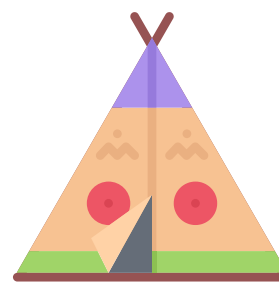
☐ EDIBLE GARDEN



☐ CAFE



☐ PLAYGROUND



☐ TEEPEE



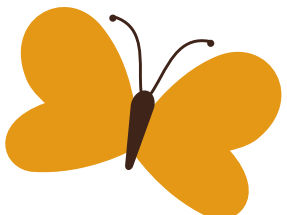
☐ PITTER PATTER  
POTTER GARDEN



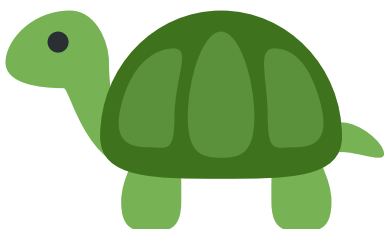
☐ SANDPIT



☐ POND



☐ BUTTERFLY GARDEN



☐ TERRAPIN



WHAT ELSE DID YOU FIND?  
WRITE YOUR FAVOURITE FINDS HERE



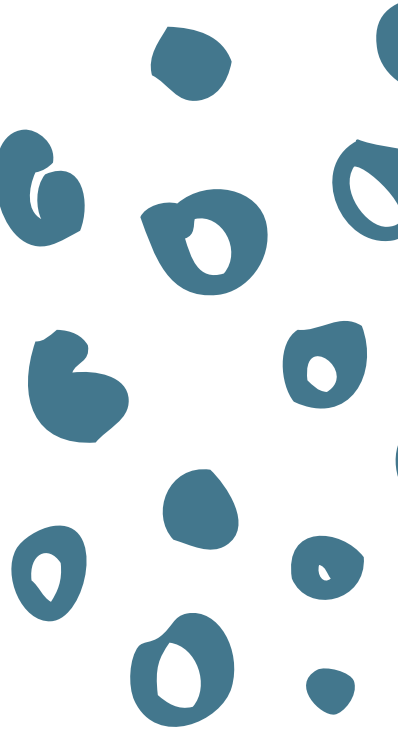
☐ NATIVE GARDEN



☐ FLORAL WALK

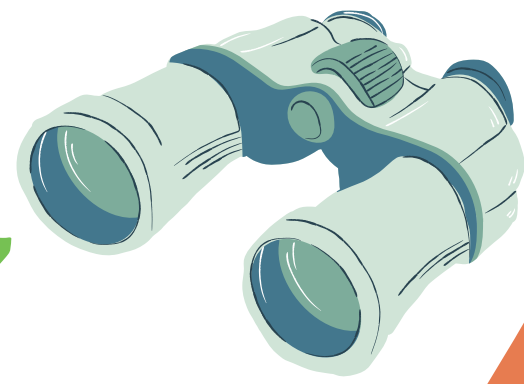


☐ GOLDEN GARDEN

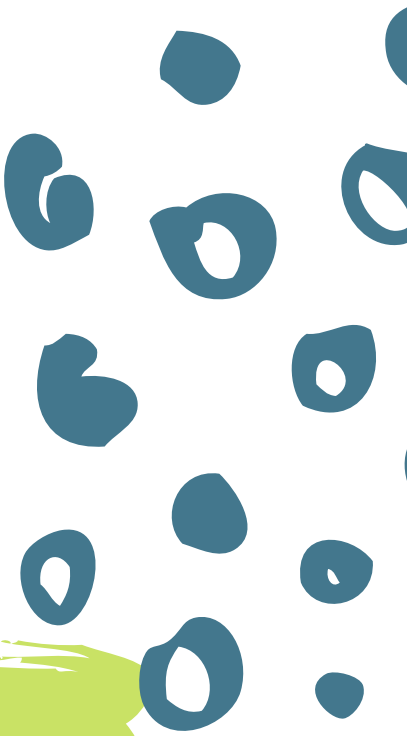




# HORT PARK QUIZ

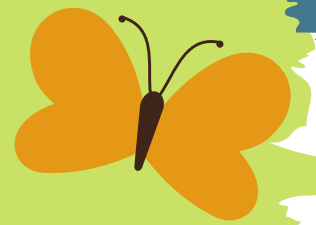


HOW MANY DIFFERENT ZONES ARE THERE IN THE NATURE  
PLAYGROUND? CAN YOU NAME THEM ALL BELOW?



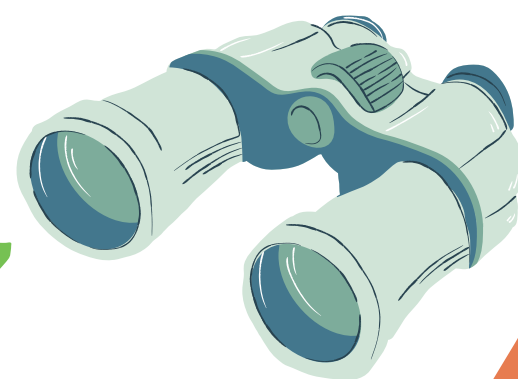
HOW MANY SINGA LIONS CAN YOU SPOT IN THE PARK?  
WHAT ARE THE LIONS THERE FOR?

WHY ARE BUTTERFLIES SO COLOURFUL? (CLUE - FIND OUT  
IN THE BUTTERFLY GARDEN!)





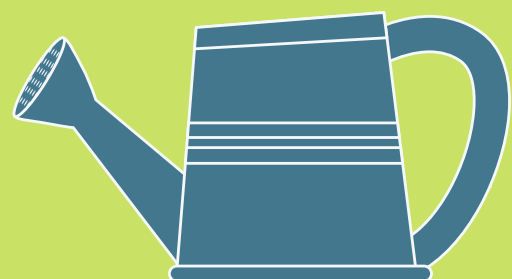
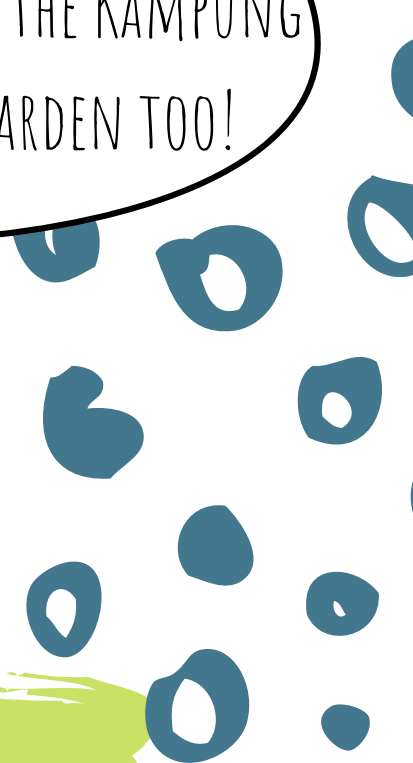
# HORT PARK QUIZ



WHAT IS A KAMPUNG?  
(GO TO THE JLN BALIK KAMPUNG GARDEN TO FIND OUT!)



SEE IF YOU CAN FIND THE KAMPUNG  
FAMILY IN THE GARDEN TOO!



WHAT IS A COMMUNITY GARDEN?

WHAT COLOUR FLOWERS DOES THE TEMPUSU TREE HAVE?



(CLUE - LOOK FOR THE STREETS OF SINGAPORE SIGNS!)



# SPECIAL PROJECTS



## GET THE SCOOP!

Fancy yourselves as a reporter? Then write up a story from your visit to Hort Park and send it to us. You might even make it onto the blog!

## LIGHTS, CAMERA, ACTION!



If you're a budding photographer then don't forget to take your best shots whilst trying to find everything on our Explorer Checklist. Send us your favourite pictures and we will be sure to feature them. Spotted something unusual? Be sure to snap it and send it our way! You could also take a video of your adventures to share.



## MAKE YOUR OWN TREASURE TRAIL

Fancy putting your family and friends through the test? Create your own trail with clues for them to guess and find different places in the park. Use this pack to help you with some clues.

## CHOOSE A PARK GAME



There's a whole host of places to explore in the park and areas perfect for games. Head to the Nature Playground for a fun game of hide and seek, with plenty of great hiding spots, or have a race and see who can be crowned the best detective and be the first to spot the items in our i-spy guide!

## BEE TRAIL!



NParks have a brilliant bee trail for Hort Park (available [here](#)) - it comes with a handy map and lots of information all about bees and how to find them in the park, as well as all the bee friendly plants to look out for.



## DID YOU KNOW?

HORT PARK HAS OVER 10 THEMED GARDENS - CAN YOU NAME THEM ALL? WHAT'S YOUR FAVOURITE?



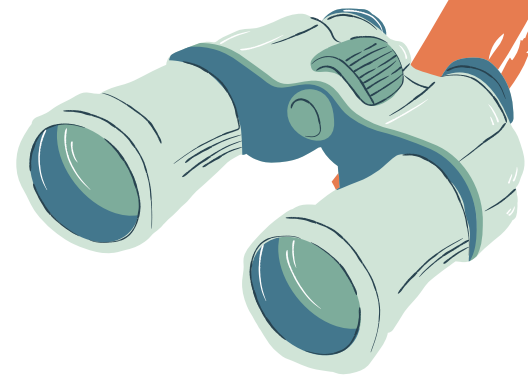




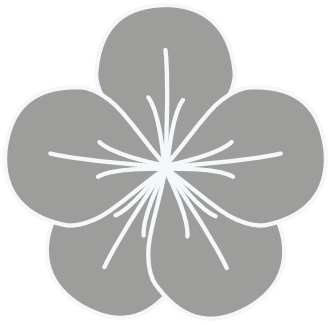
HORT PARK IS FULL OF FUN

LOTS TO EXPLORE, AND GAMES TO BE WON

HAVE YOU TRIED OUR HORT PARK QUIZ?



HAVE A GO, SEE IF YOU'RE A DETECTIVE WHIZ!

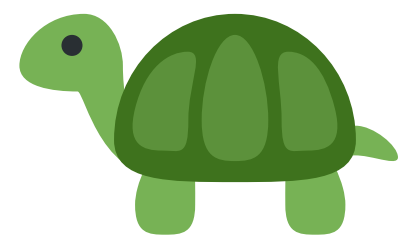


EXPLORE THE SILVER GARDEN AS YOU ENTER THE PARK

THERE'S PLENTY OF ROOM TO HAVE A LARK

DID YOU SPOT THE TERRAPINS IN THEIR POOL?

THEY'RE OUR FAVOURITE, THEY'RE REALLY COOL



WHAT ABOUT THE NATURE PLAYGROUND?

TRY THE SEED PIPES TO MAKE SOME SOUND

YOU CAN ALSO PLAY HIDE AND SEEK

JUST REMEMBER NOT TO PEEK

THERE'S LOADS OF BRILLIANT HIDING PLACES

AND DID YOU SEE THE PLANT POT FACES?

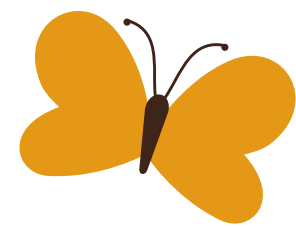


THEY ARE NEAR THE PLAYGROUND WITH THE BIG SAND PIT

THAT'S ALSO AN AREA THAT'S QUITE A HIT

THERE'S LOTS OF WILDLIFE IN HORT PARK TOO

IT'S REALLY LIKE A MINI ZOO

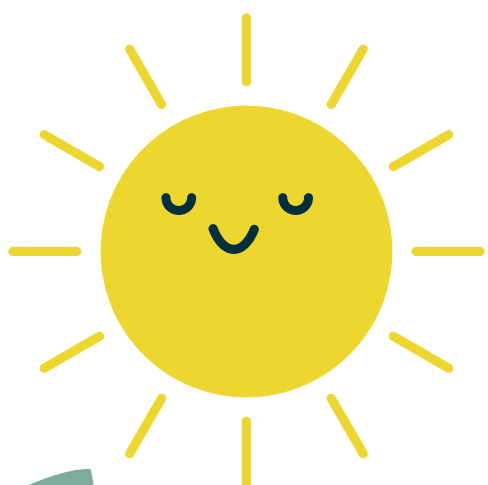


VISIT THE BUTTERFLY GARDEN TO SEE THEM FLY

AND THEN IT'S TIME TO SAY GOODBYE

WE HOPE YOU'VE HAD LOTS OF FUN

AND ENJOYED HORT PARK IN THE SUN.







VISIT US AT



THEGUESTBOOKS.COM

FOR MORE KID FRIENDLY TRAILS  
AND ACTIVITIES IN SINGAPORE!

