

# Rossett Rambles

Explore Rossett, Burton, Lavister & Trevalyn

5

Rossett - Broad Oaks - Burton Meadows - Burton - Rossett  
6.25 Miles  
3hrs

*A long flat walk taking in Burton Meadows and distant views of Moel Famau & Hope Mountain whilst exploring wide open spaces.*

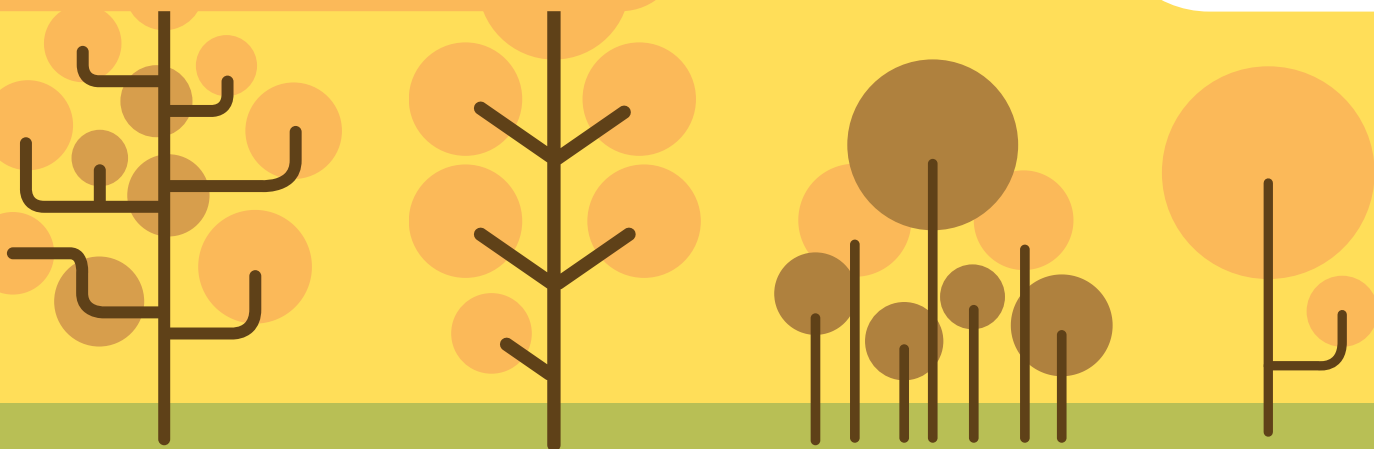


Begin the walk at the top of Rossett Park near the Co-op store. Cross over Chester Road and stay on the left hand pavement as marked.

Walking along Chester Road to your left you will see wide open fields, including this tree stump which one local resident informs me he calls 'Nowhere' as when courting his girlfriend many years ago much to the irritation of both sets of parents they would tell people they were off 'Nowhere' in particular!



Take the first turning on your left down Llyndir Lane, as shown on the photograph on the left.



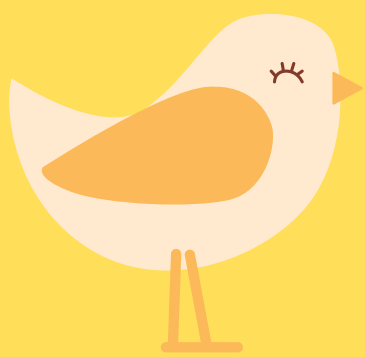




As you walk along Llyndir Lane you will notice this group of trees across the field to your left. Here in the undergrowth is St Peter's Well. Named in the Domesday Book it allegedly was famed for curing poor eyesight! Continue past the entrance to Llyndir Hall hotel until you reach a junction (see below), follow the road round to the left.



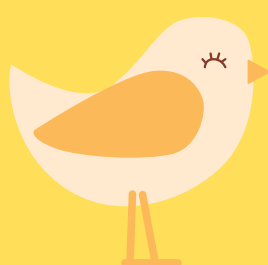
Further along the road you will pass Broad Oaks farm to your right and then the railway crossing marked below, cross with care and continue straight on.



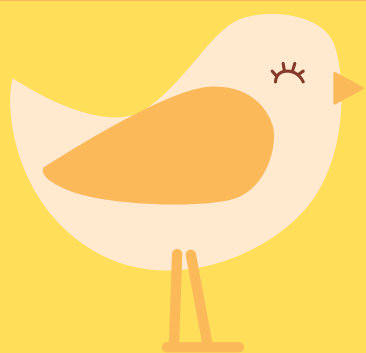




Continue over the bridge crossing the A483 after the level crossing and continue until you reach public footpath BUR-27 which is marked on picture #10, cross the stile into the field on your right.



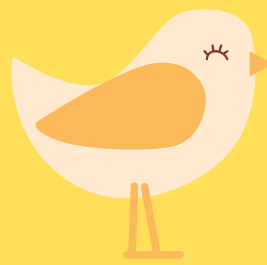
Follow the path until the end of the field and as shown below cross into the second field.







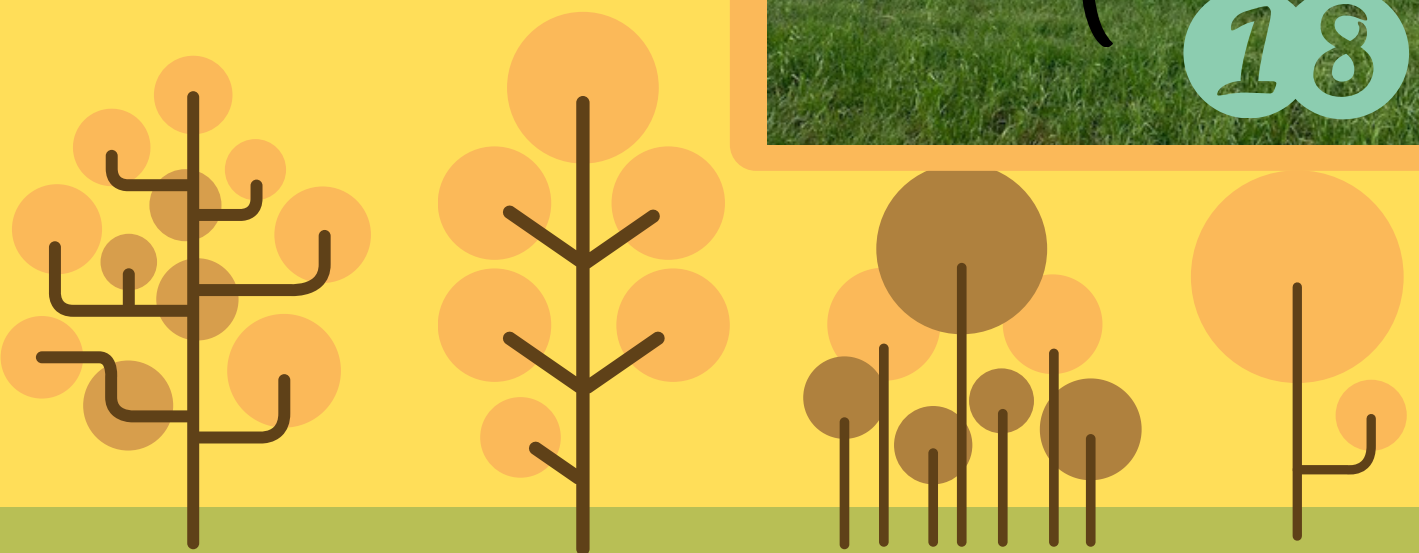
Bear right 'two o' clock' once over the stile, continuing on footpath BUR-27 and head towards the foot bridge shown in the left hand picture. Take care as only the right hand side is railed.



Once across the bridge continue on footpath BUR-27 by again heading 'two o' clock' as marked above until you reach the stile shown in picture #17.



Once across the stile head to the corner of the small woodland as shown by the marker.



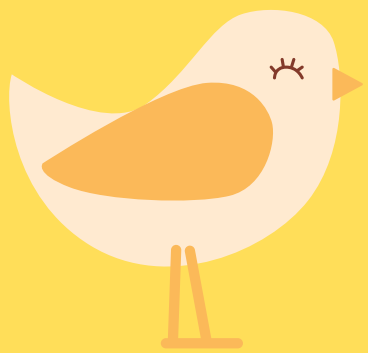




Once you round the corner of the woodland head towards the stile shown by the marker (left). At the stile as shown in picture #20 if you follow the white arrow for 50 yards or so you can see both Hope Mountain and in the distance Moel Famau.



Return to the previous stile and now take the black arrow shown in picture #20 continuing along the bridleway (BUR-26) shown in #23.



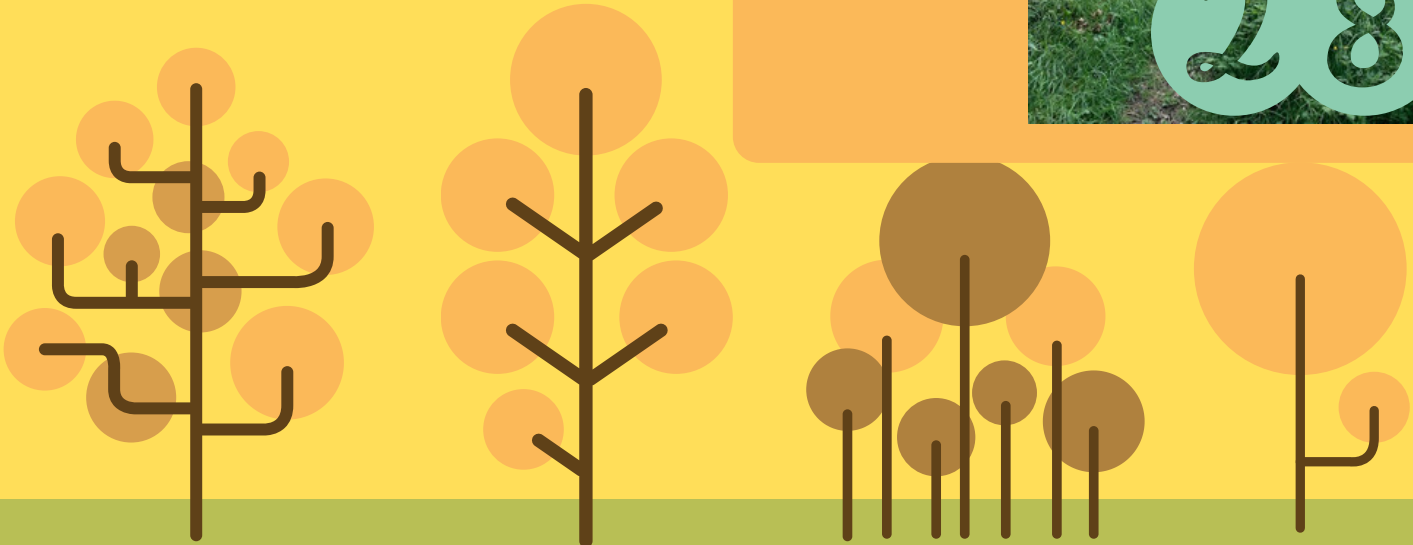
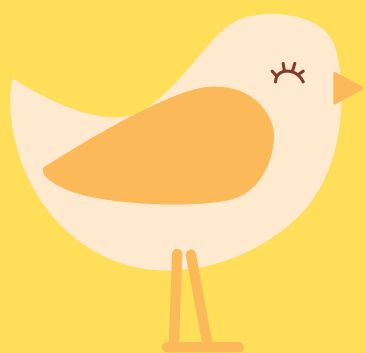




Follow the bridleway along the left of the next two fields until you reach the clearing shown in picture #25, head straight across the bridge ahead and on to footpath BUR-24. This will take you past a house on the right and then into the woodland shown in #27.



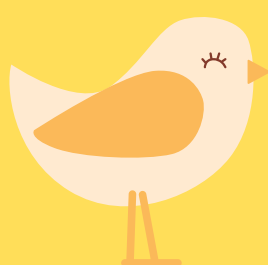
Follow the track along until you see a clearing to your right as shown in #28, follow this path until you enter the meadow.



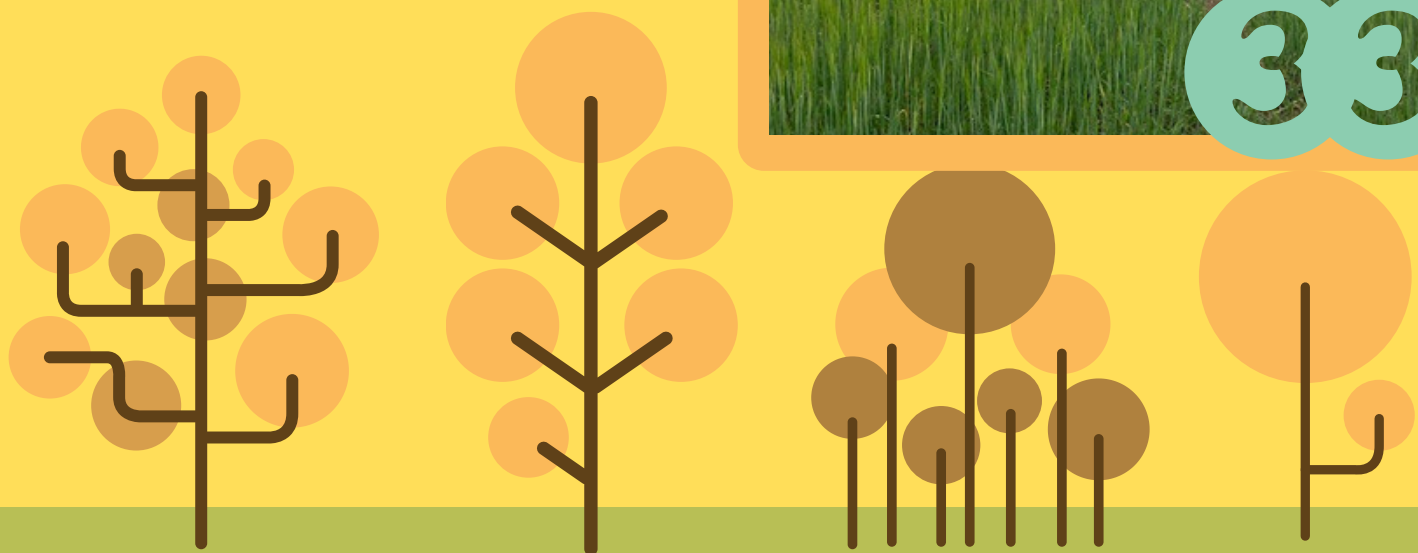
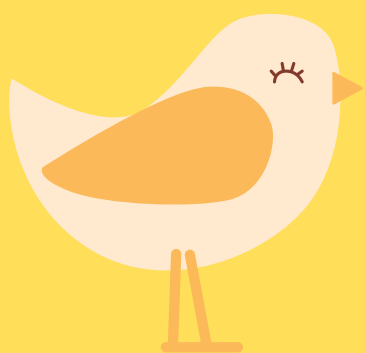




Follow the path through the meadow until you reach a stile in the left hand corner. Once over the stile bear left and immediately right as shown in #30 and then follow the field to the left until you reach the next stile.



Crossing this stile cross another field straight ahead keeping to the left, until you reach Stringers Lane. Take a left immediately when you reach the road.

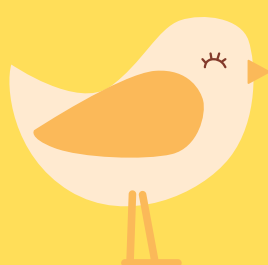




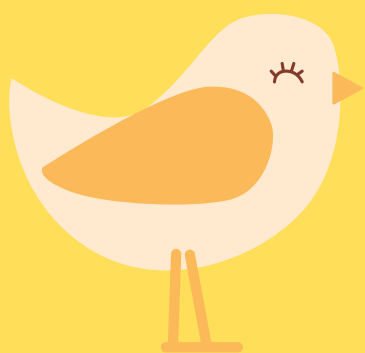


Head left down Stringers Lane keeping to the right of the lane until you reach the junction.

As marked turn left and then take the next turning on the right.



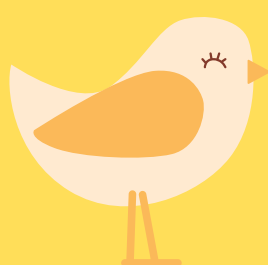
Head down Burton Hall Road keeping to the right until you reach the pavement on the left and then carefully cross over as in #38.



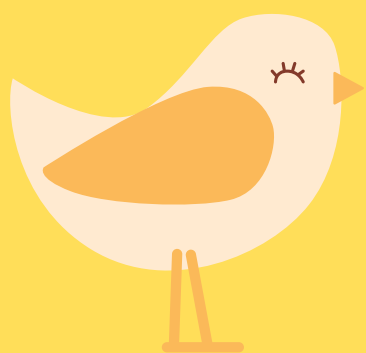




When you reach the end of Burton Road, keep to the left and head under the underpass into Station Road, follow the road to the end and turn left onto Chester Road.

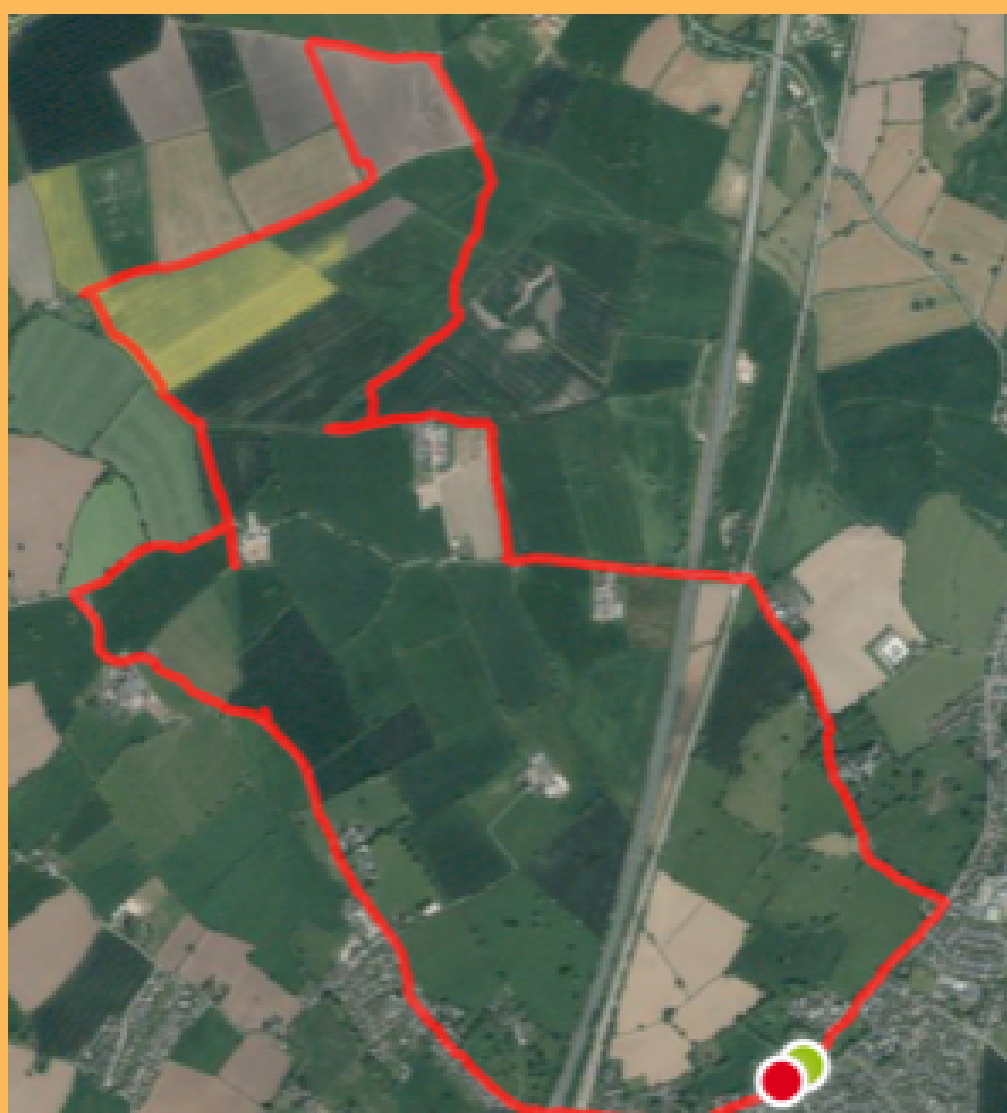


Continue down Chester Road past the Church and the Golden Lion until you reach your starting point at the park, the end of the walk.





The picture below is an overview of our walk around this route around Burton Meadows.



## Tee's & See's

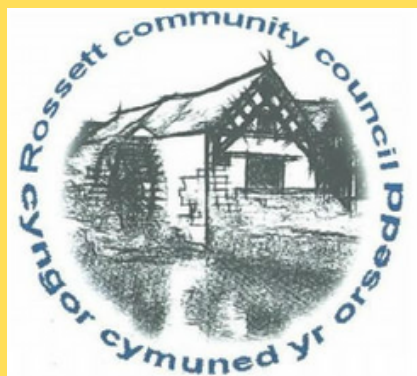
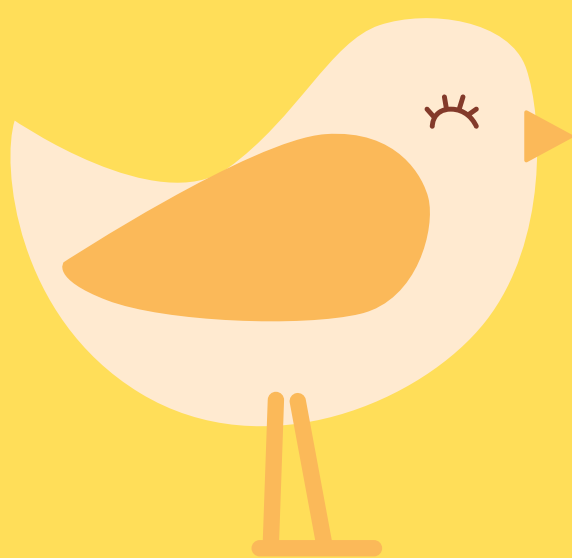
Always be aware that public footpaths cross fields that may contain cattle and you may need to alter your route to avoid them. Dogs should always be on leads in these areas in particular.

Go to Wrexham Council's web page detailed below to see a live map of all of our public footpaths and make up your own route around our village or change your journey if a path isn't available at that time! ;

[http://www.wrexham.gov.uk/english/leisure\\_tourism/provw/definitive\\_map.htm](http://www.wrexham.gov.uk/english/leisure_tourism/provw/definitive_map.htm)

The use of our public footpaths is a great opportunity to explore the local area, if you see any Stiles that need repairing or areas that are blocked please let Wrexham Council know to keep these pathways open;

[https://www.wrexham.gov.uk/english/leisure\\_tourism/provw/reporting\\_problems.cfm](https://www.wrexham.gov.uk/english/leisure_tourism/provw/reporting_problems.cfm)



*Compiled by Rossett Community Council & thequestbooks.com*

*Walked By: Cllr Allan Parrington  
27.06.2020*

