

# Rossett Rambles

Explore Rossett, Burton, Lavister & Trevalyn

4



Rossett - Burton - Broad Oaks - Rossett

3.25 Miles

1hr 15min

*A short circular route from Rossett to Burton & Back,  
perfect for a shorter walk on a busier day.*

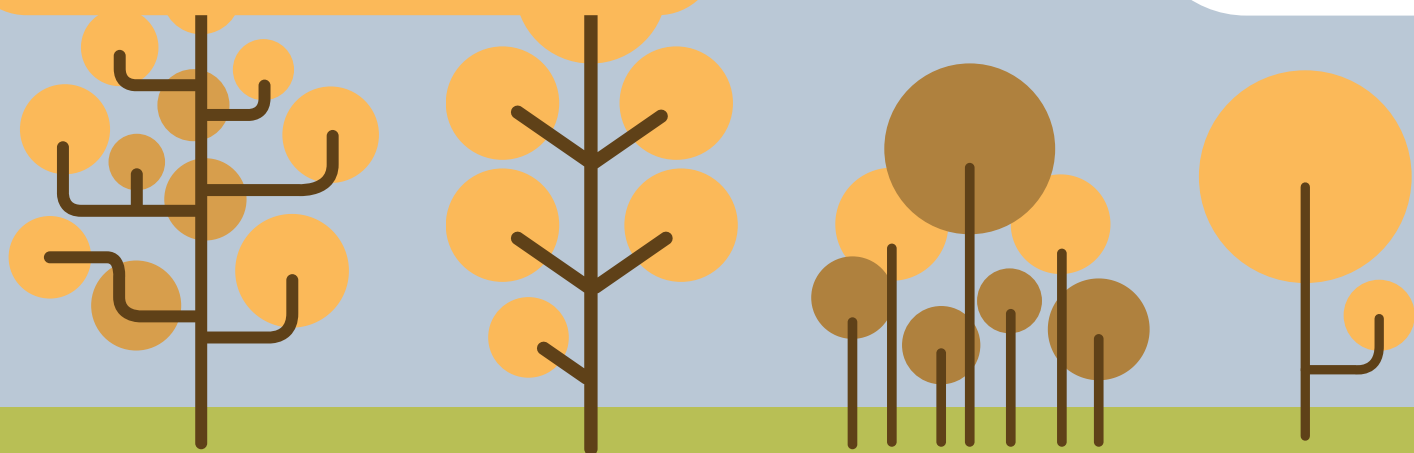
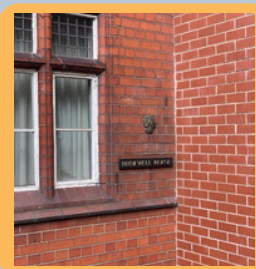


Begin your walk from outside the village cafe 'Cwch Ceramics', head along Chester Road towards Wrexham. Soon you will pass Gun St on your left. This was the main route through the village in the 19th century.

Head along Chester Road as indicated by the bird marker in the picture above. To your left will be Halkyn Terrace with it's distinct chimneys and the old police station aptly named 'Bridewell House'



Soon you will see Rossett Parish Church on your right.

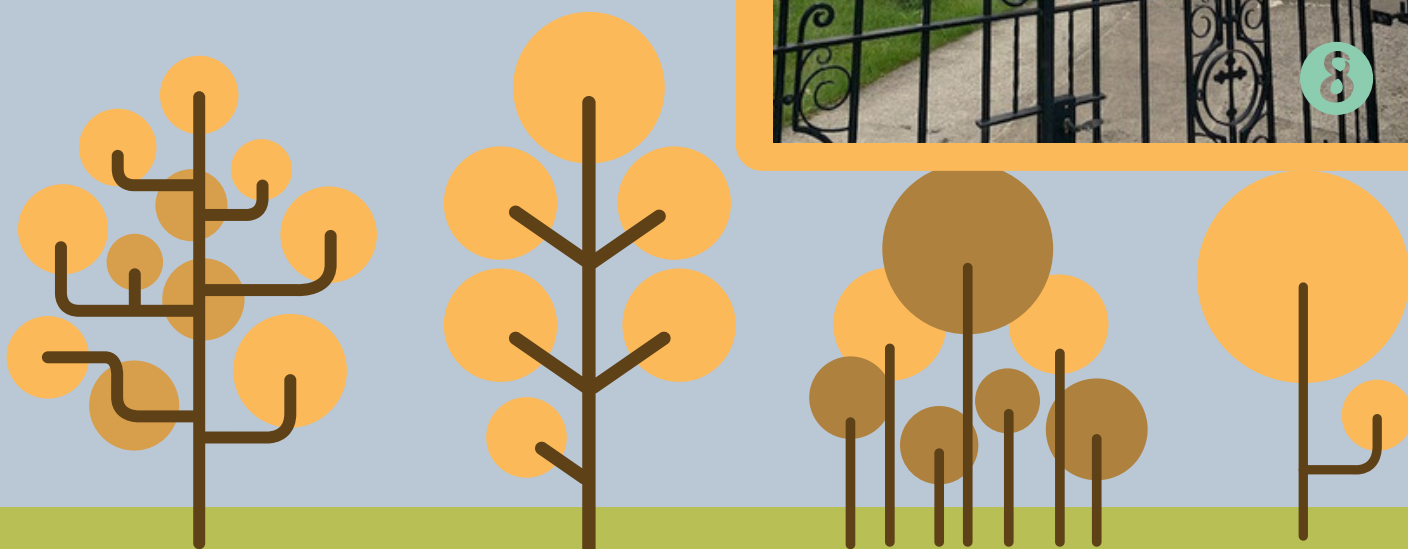
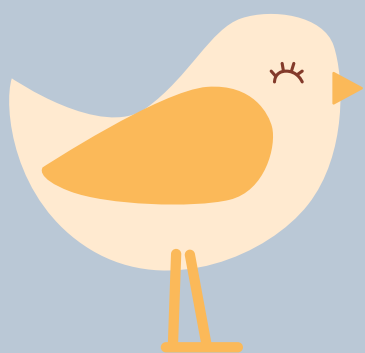




Cross the busy road as marked, take care. Turn right by the Alyn pub onto Station Rd. On the left you will find the Presbyterian Church with it's impressive spire, then the former 'Cocoa Rooms' once a temperance venue for local young people now converted into offices.



Next you will pass the Village Hall, there is a notice board here with updates on village events and the community council





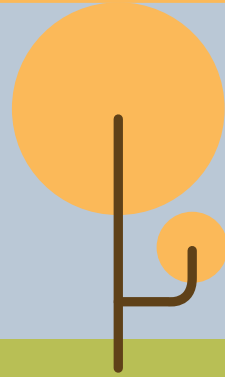
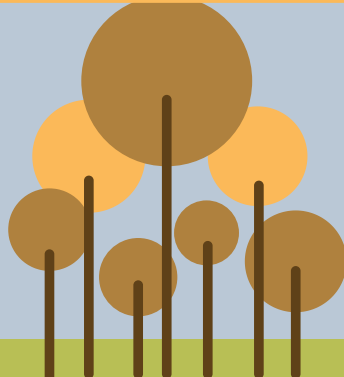
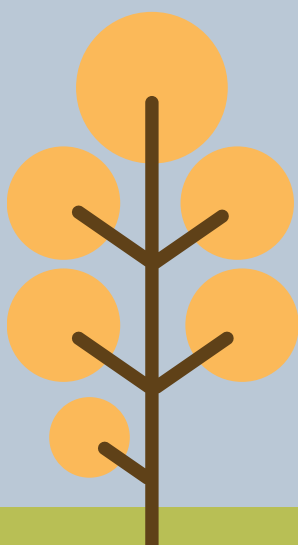
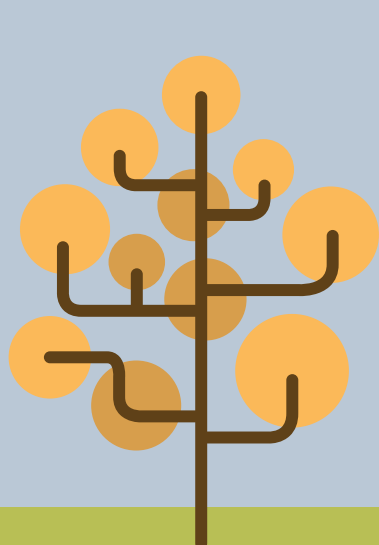
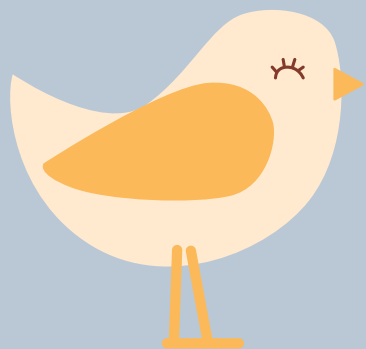
When you reach the end of the road you will see the Wrexham to Chester railway line and the former site of the village train station closed in the Beeching cuts of the 1950's. Carefully cross the rail tracks towards the underpass.



Proceed through the underpass until you emerge by picture #11, then keep to the right onto Burton Road.



Stay on the pavement on the right hand side of the road until it runs out. Keep to the right until Burton Road merges with Burton Hall Road at the junction with Rosemary Lane.





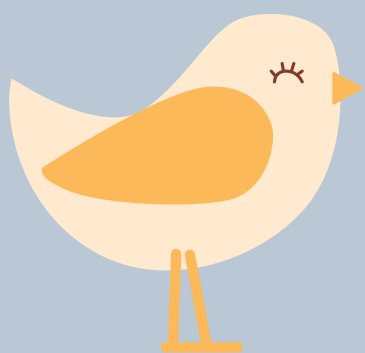
Just after the junction you will pass Rosemary Gardens on your left, this was the former site of Rosemary Nurseries run by Nat & local historian and community councillor Helen Maurice-Jones for many years.



When you reach the end of the wall in picture #15 turn right and head down the footpath marked (BUR-7).



When you approach the small woodland ahead cross the stile and follow the path through the woods, in late spring the display of bluebells is beautiful.

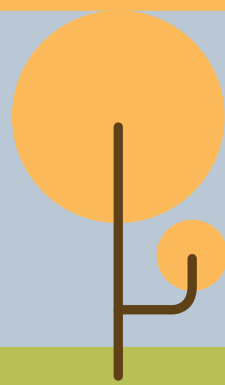
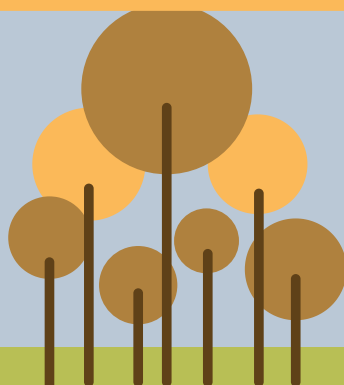
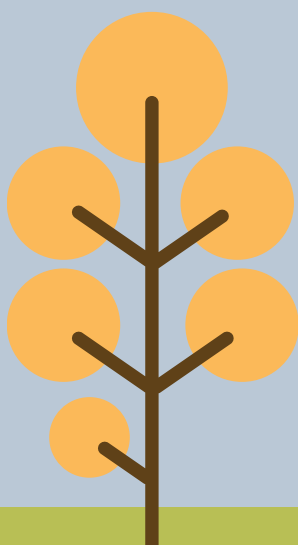
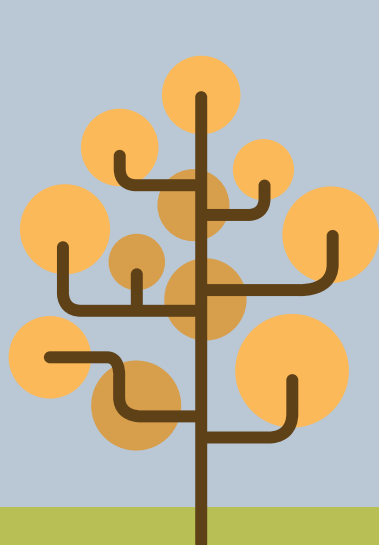
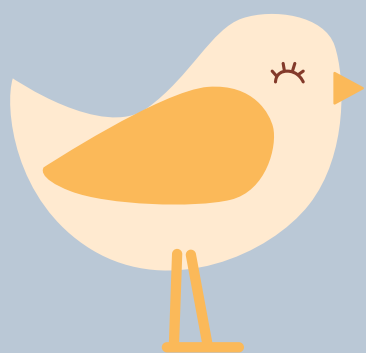




Reaching the end of the path the stile is in the far left corner as marked and the public footpath BUR-7 goes diagonally across the field until the corner of the farm hedge as shown.

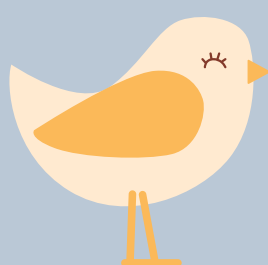


When you reach the track head straight down until you reach the stile in picture #23, cross the stile and the footpath BUR-6 is immediately on your left.

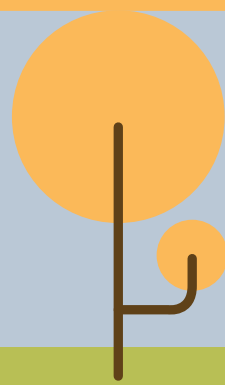
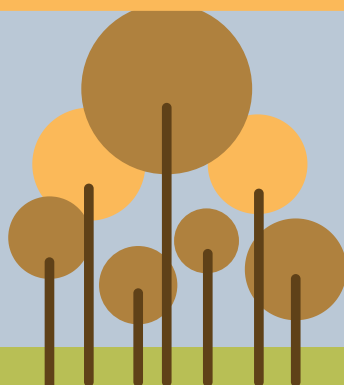
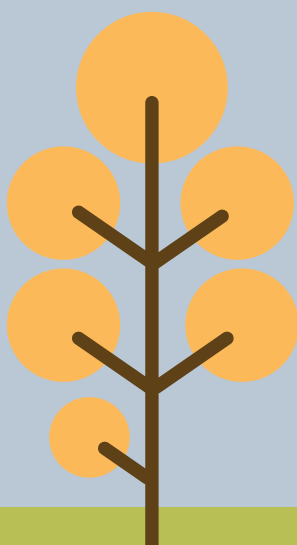
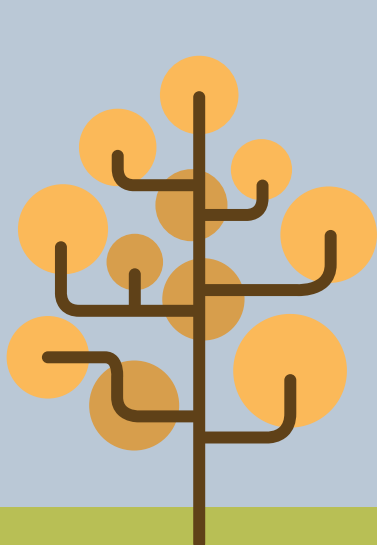
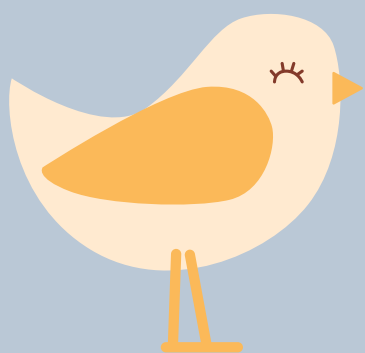




Follow footpath BUR-6 along the left hand side of the field and continue until you reach the next stile at the end of the field.



Continuing on footpath BUR-6 remain on the left of the field until you reach the stile in picture #27, cross and follow the markers in #28 keeping to the right hand side of the field.

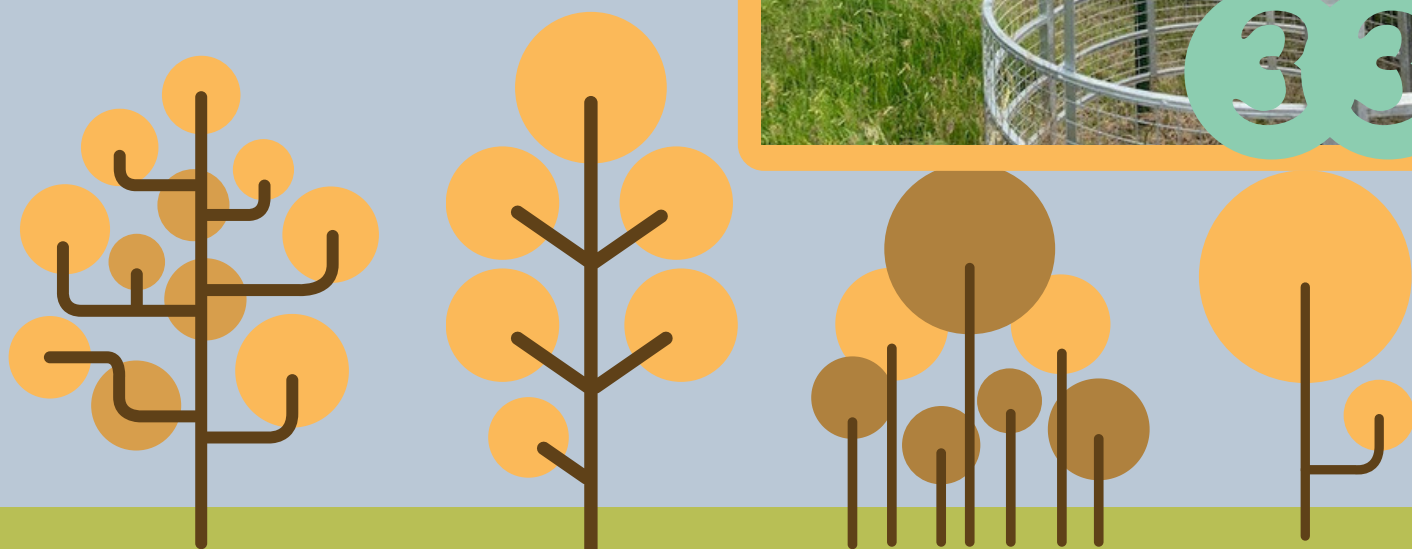
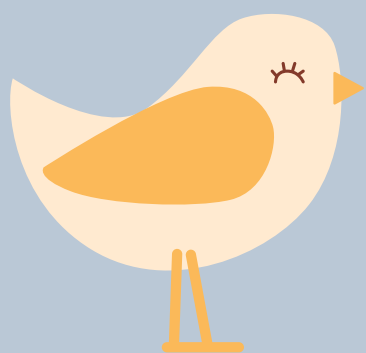




At the end of the field you will exit the footpath onto Cobblers Lane. Turn right and keep to the right hand side of the narrow road.

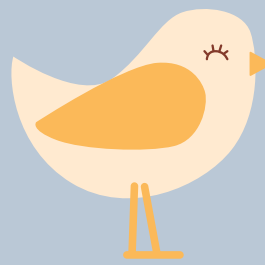


Continue down the road until you cross the bridge over the A483 and then the Broad Oaks railway crossing pictured in #32, on your right you will see the entrance to footpath BUR-2, go through the gate and keep to the right.

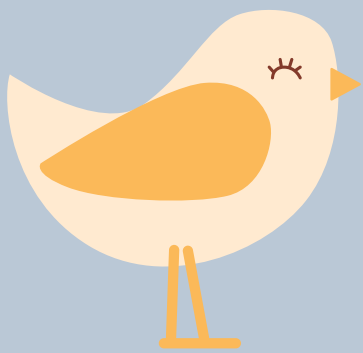




When you reach the next gate carry on over a small footbridge and continue along footpath BUR-2 keeping to the right of the field until you reach the stile in picture #36.

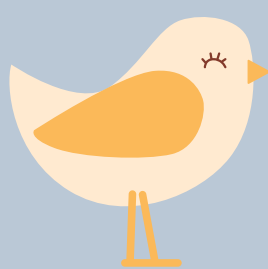


Continue along the footpath until you reach the end and the stile below, cross the stile and follow the field along the right hand side which is footpath ALL-14.

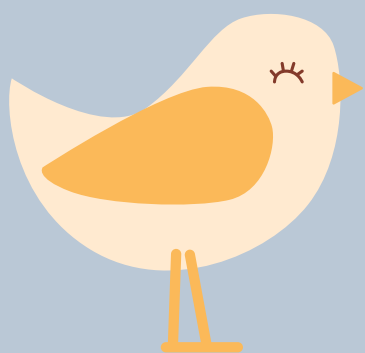




When you reach the end of the field follow the field around to the left until you find a stile on your right as shown by the bird markers. Once over the stile head straight across the field using footpath BUR-4 until rejoining ALL-14 after the stile.



Follow this narrow footpath a short distance cross another stile. Head past Rossett Cottages on your right onto Chester Road.





When you reach the road to will see Rossett Park on your left and across the road to your right, the village cafe where you started from.



The picture to the left is an overview of our walk.

## Tee's & See's

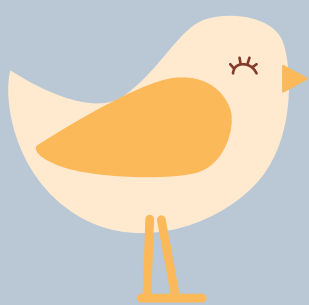
Always be aware that public footpaths cross fields that may contain cattle and you may need to alter your route to avoid them. Dogs should always be on leads in these areas in particular.

Go to Wrexham Council's web page detailed below to see a live map of all of our public footpaths and make up your own route around our village or change your journey if a path isn't available at that time! ;

[http://www.wrexham.gov.uk/english/leisure\\_tourism/prow/definitive\\_map.htm](http://www.wrexham.gov.uk/english/leisure_tourism/prow/definitive_map.htm)

The use of our public footpaths is a great opportunity to explore the local area, if you see any Stiles that need repairing or areas that are blocked please let Wrexham Council know to keep these pathways open;

[https://www.wrexham.gov.uk/english/leisure\\_tourism/prow/reporting\\_problems.cfm](https://www.wrexham.gov.uk/english/leisure_tourism/prow/reporting_problems.cfm)



Compiled by Rossett Community Council & [theguestbooks.com](http://theguestbooks.com)

Walked By: Cllr Allan Parrington  
14.06.2020

