

# Rossett Rambles



Explore Rossett, Burton, Lavister & Trevalyn



Rossett - Trevalyn Meadows - Cooks Bridge - Rossett  
6 Miles  
2 1/2 hrs

*A long and flat walk taking in the open green spaces of Trevalyn Meadows and expansive views from Pulford Brook.*

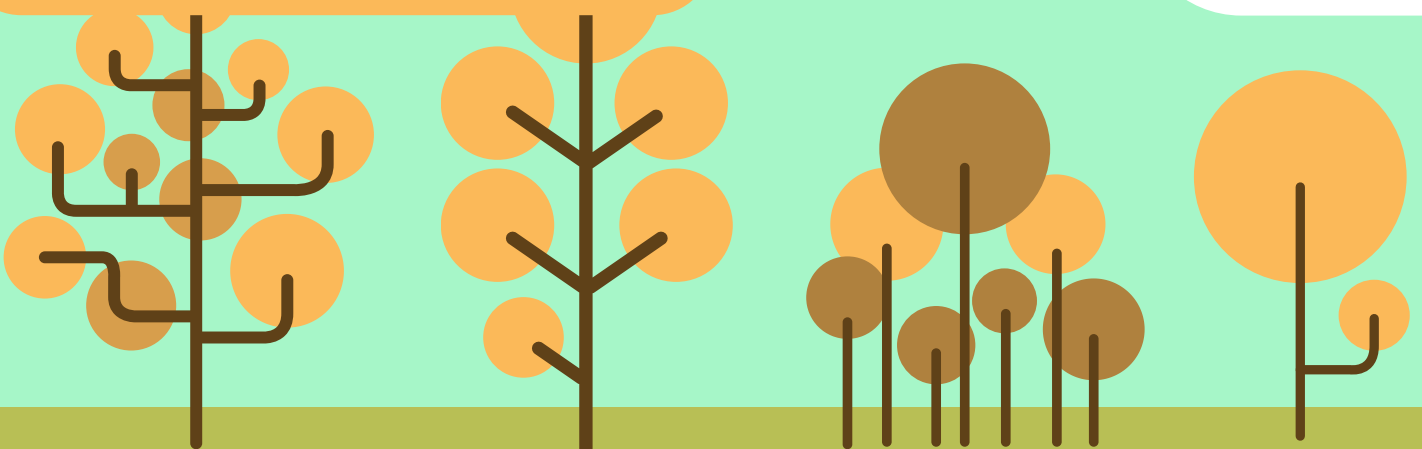


Beginning at the top of Rossett Park (with the park on your right) head towards Chester along Chester Road, passing the car salesroom, and the junctions with Chapel Lane & Waverly Crescent.

Just before you reach the flats and shops next to the bus stop, take footpath ALL/22 to your right, this takes you to the rear of Darland High School.



Follow the path and take a left (see the bird marker in the left hand picture) and follow the path around the corner.



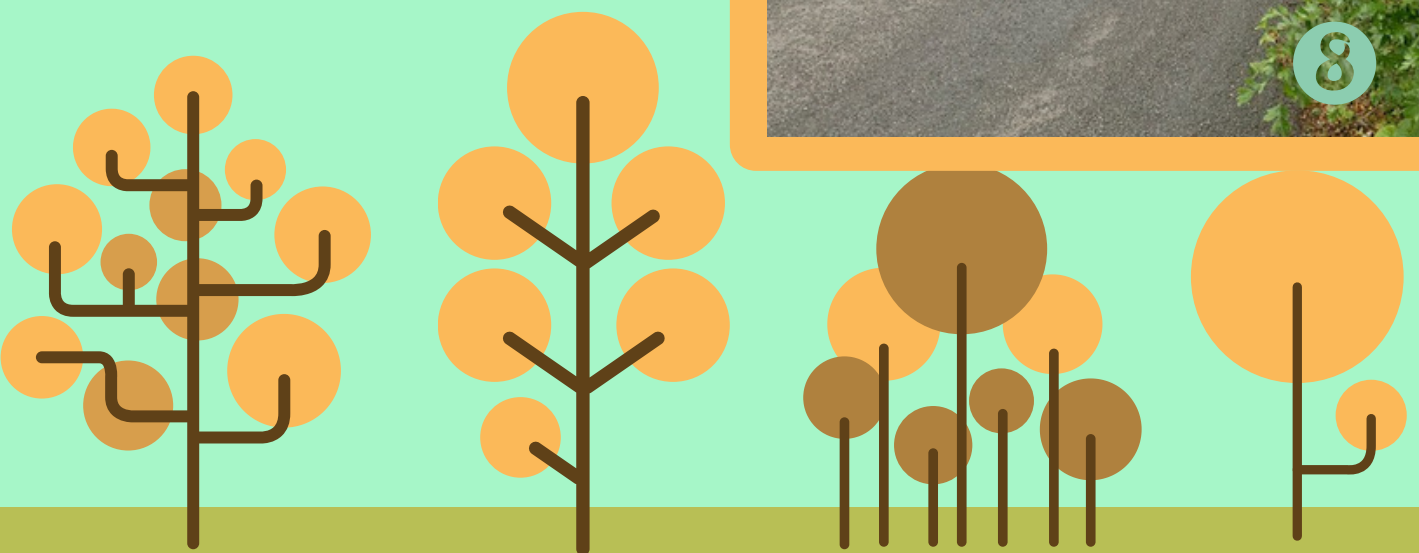
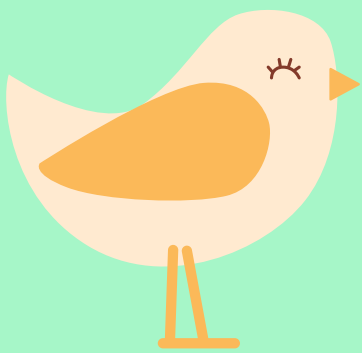




Head towards the green fencing and there is an immediate right turn and then a left (see the bird markers below), follow the path and you will emerge on to Gamford Lane.



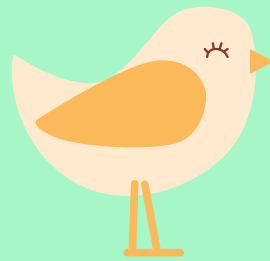
Turn right down Gamford Lane passing the Darland School playing fields on your right. Take care the road is narrow and there is no pavement.



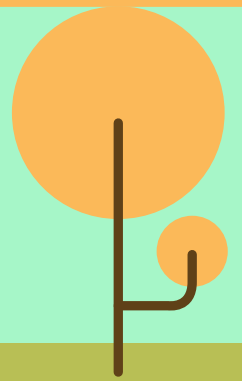
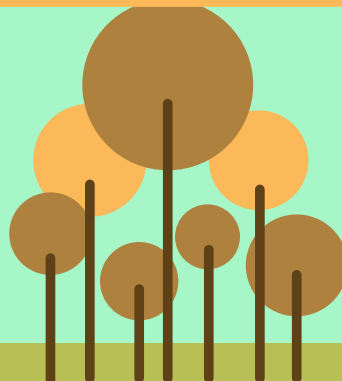
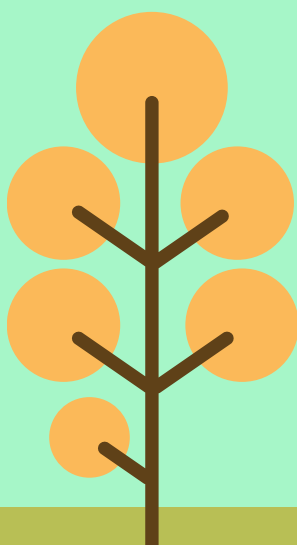
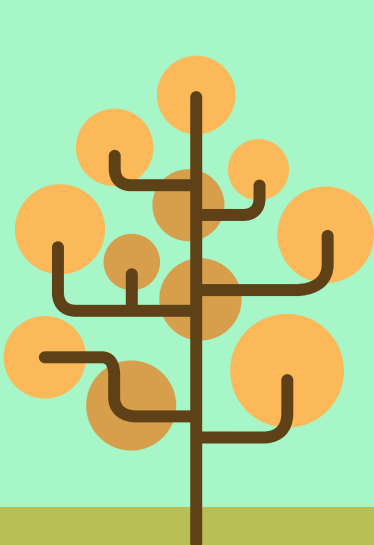
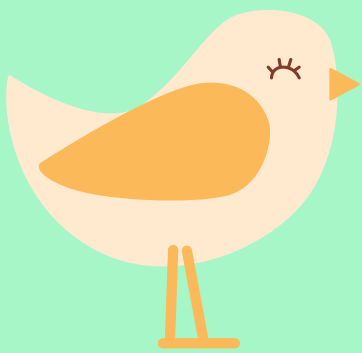




Walk diwn Gamford Lane until you reach the junction with Rossett Road, proceed straight ahead until you reach the next left turn in to Darland Lane. Walk a short distance until you reach the junction with Narrow Lane.



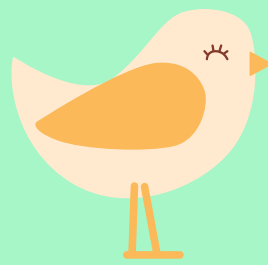
Ahead to the right you will see a footpath sign, go through the 2 pedestrian gates and onto footpath ALL-15. The footpath goes across the field at 'two o'clock' until the next stile.



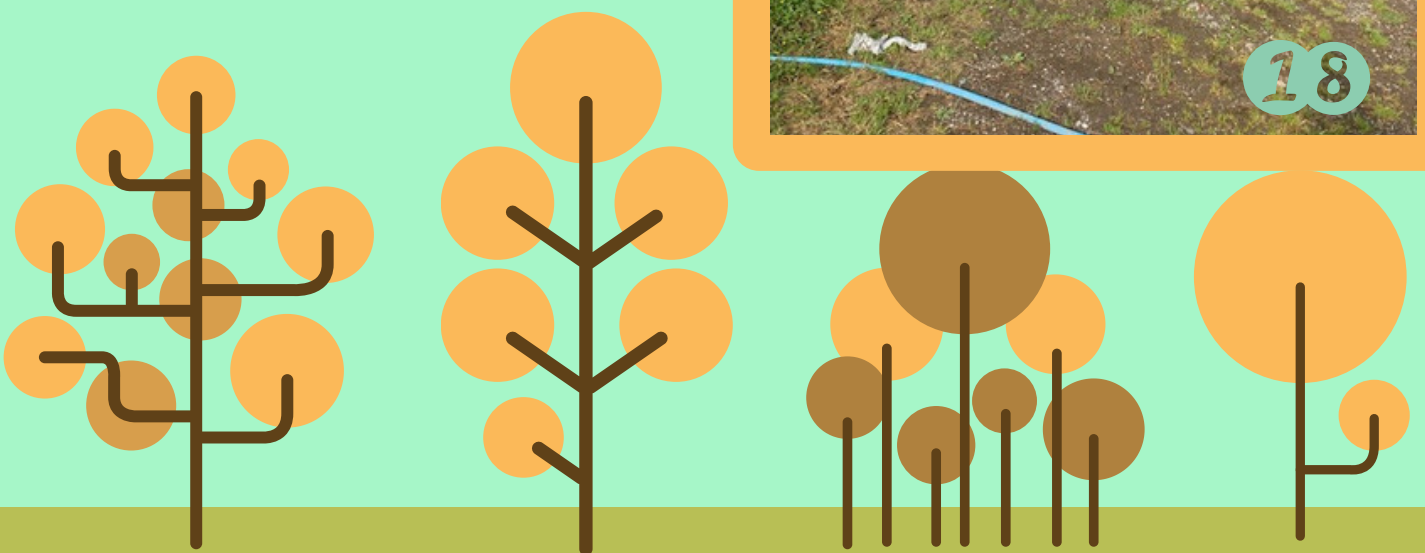
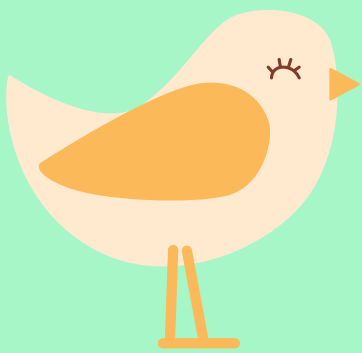




After the stile head to the left, you will find an open gate with a large ditch on your right. Keep to the right of the field (as per the marker below) until you reach a pedestrian gate which takes you onto a farm track to the left. Follow the farm track until you see a house on your left.



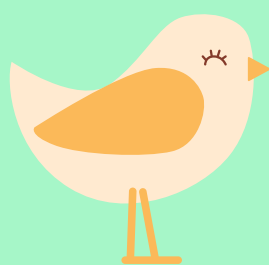
Continue straight ahead (step over the low rope if it is in situ) and follow the farm track right down to the end where you will reach a gate by Meadow House.



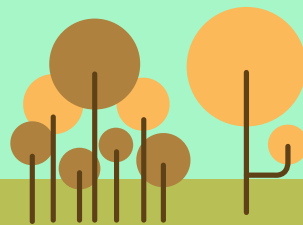
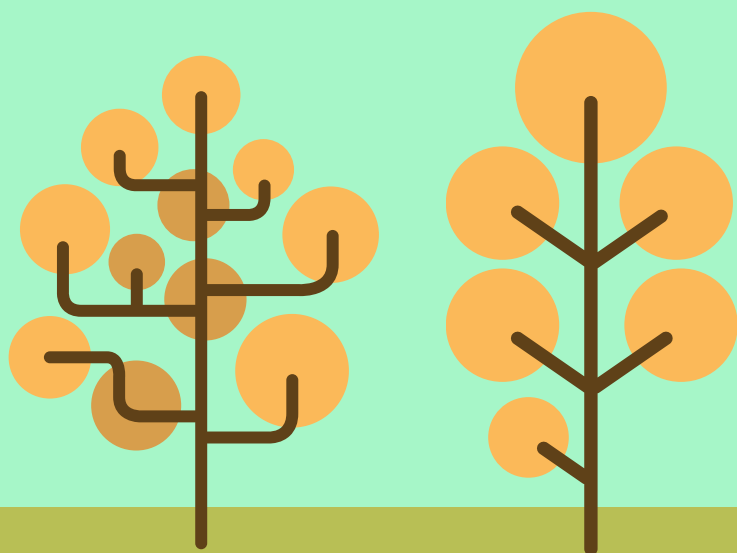
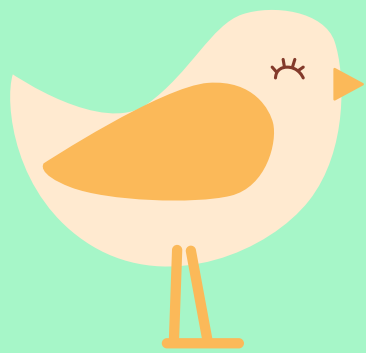




Go through the gate and head directly across the field following footpath ALL/38 to the top right (see the picture below left). Proceed through the gate and keep to the right all the way around the next field.



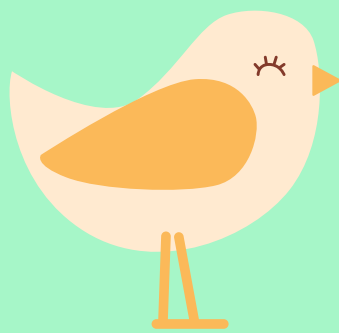
When you reach the bridge you merge onto Bridleway ALL/37, head towards the pump house (see the marker in the picture below). When you reach Pulford Brook turn immediately left, don't cross the brook.



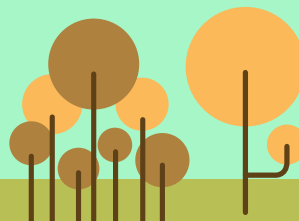
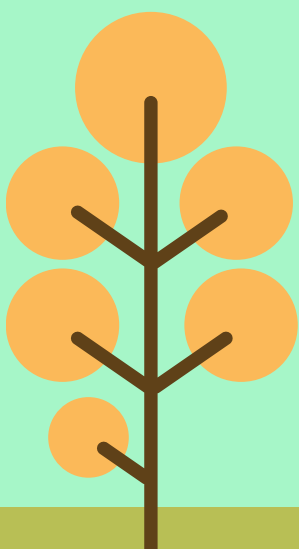
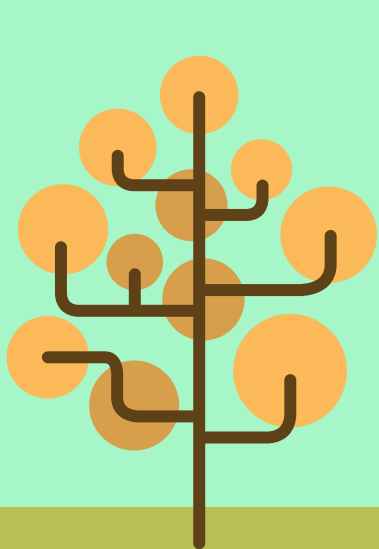
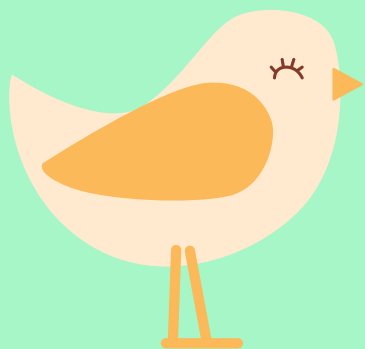




Follow the embankment alongside Pulford Brook, which is footpath ALL/4, keeping to the well defined footpath (see picture below, indicated by the markers)



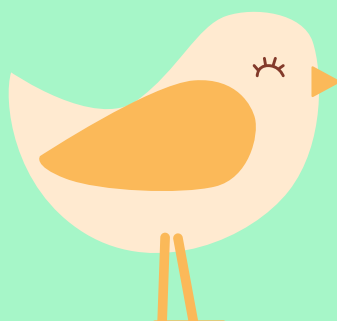
When you reach the gate (shown in the picture to the left) turn left down the embankment into the field keep to the left of the field which is footpath ALL/39.



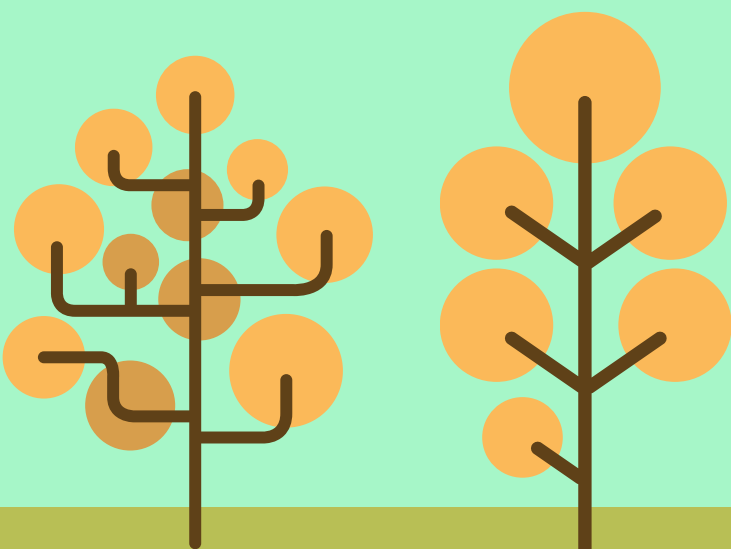
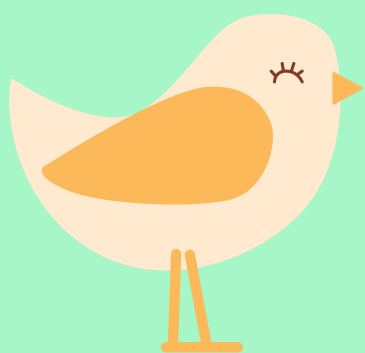




Head straight down the field until you get to the way marker, cross the next field keeping to the left hand side. When you reach the short track and gate on your left, turn left.



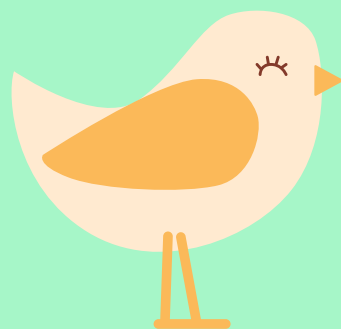
This path (still ALL/39) takes you back to Meadow House and the farm track you were on previously. Take the gate marked with a way marker on your left into the field, onto footpath ALL/24. Head straight across to a gate. There are occasionally horses in the field here so it is important to keep dogs on leads.



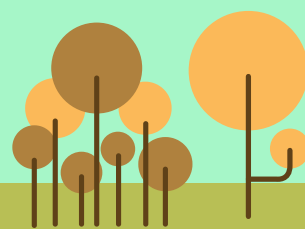
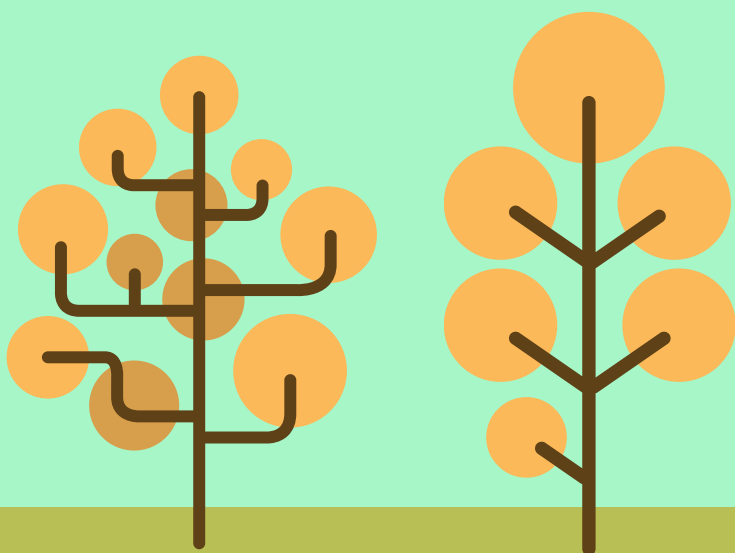
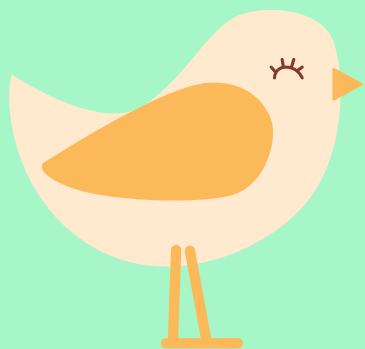




Head across the field (as indicated) on footpath ALL/24 and ALL/23 until you reach the stile in the far corner of the field after crossing a farm track in the middle of the field.



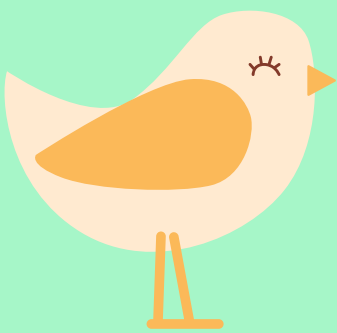
Cross the stile on to Almere Ferry Road go straight on toward's Ithells Bridge farm. When you reach the corner in front of the farm go through the gate to the right (see picture below)





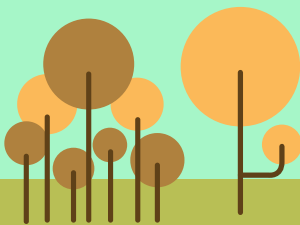
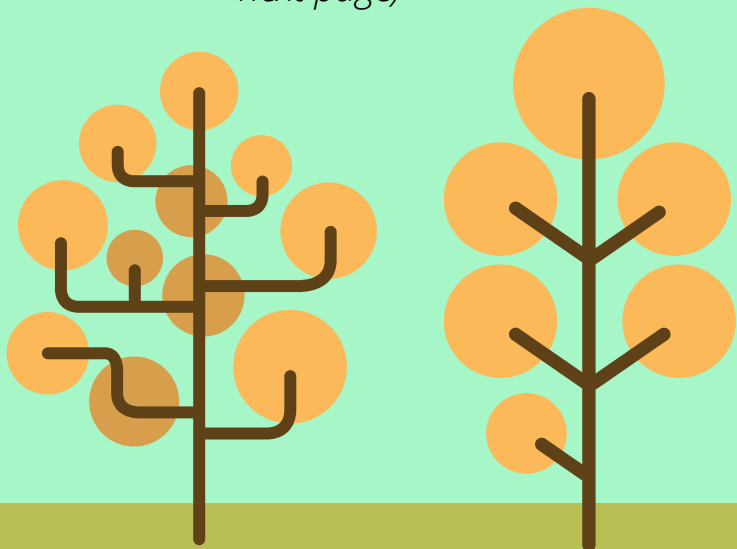


Follow the path keeping to your right (see picture on the left). You will reach a stile on your right (see picture below left), climb over and keep to the left until you reach the next stile (see picture below right)



Cross the next field keeping to the left alongside the river footpath ALL/27 until you reach the stile that emerges onto the main Rossett to Holt road. Cross the road taking care as it can be busy.

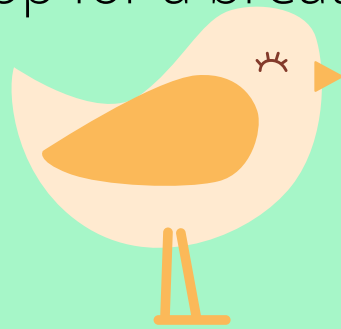
*Please note on the next section of the walk there is often cattle grazing. To avoid this section head along the road towards Rossett and take the next turning on your left, signposted Hoseley. Follow the road past the farm and rejoin the walk at Cook's Bridge (see next page)*



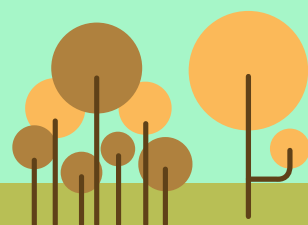
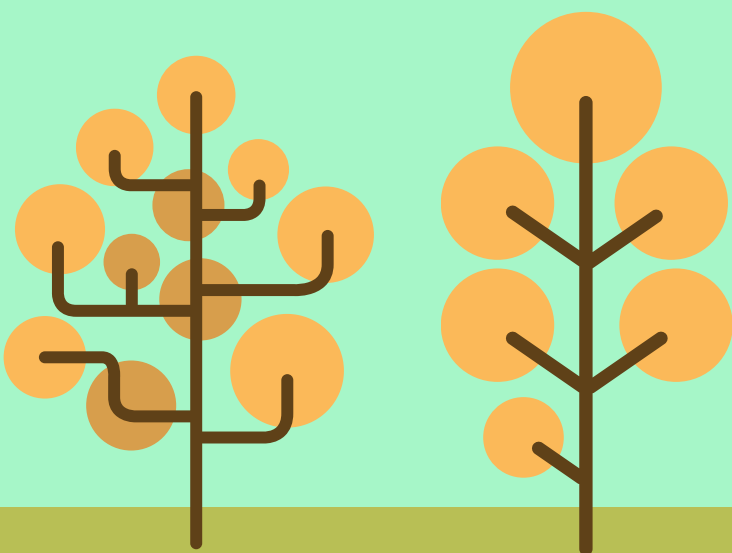
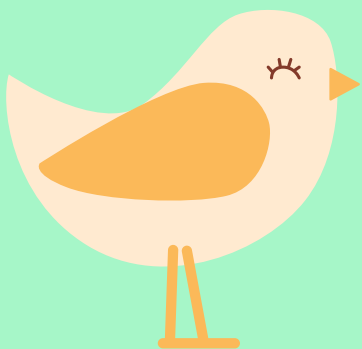




Go down the steps in to the field following the river on footpath ALL/26 until you reach Grade II listed Cook's Bridge, take a few minutes to admire the ancient bridge and stop for a breather.



Cross the road. Through the gate down the steps rejoining footpath ALL/26. Keep to the left across a field and then the footpath follows the river Alyn crossing a couple of stiles.



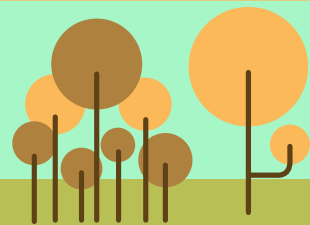
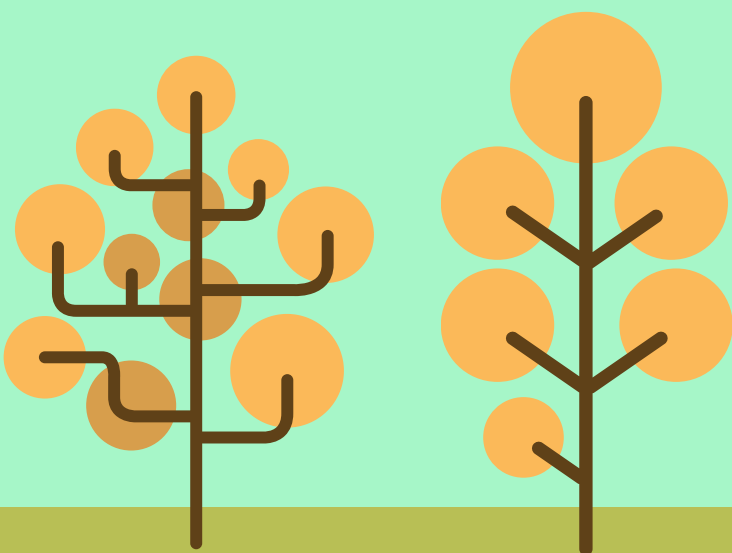
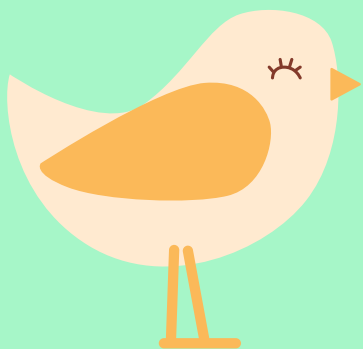




The path eventually bears right away from the riverbank. (See picture on the left). Cross the field to the stile emerging onto Harwood's lane. Turn left there is no footpath so take care and be aware of traffic down this narrow lane.



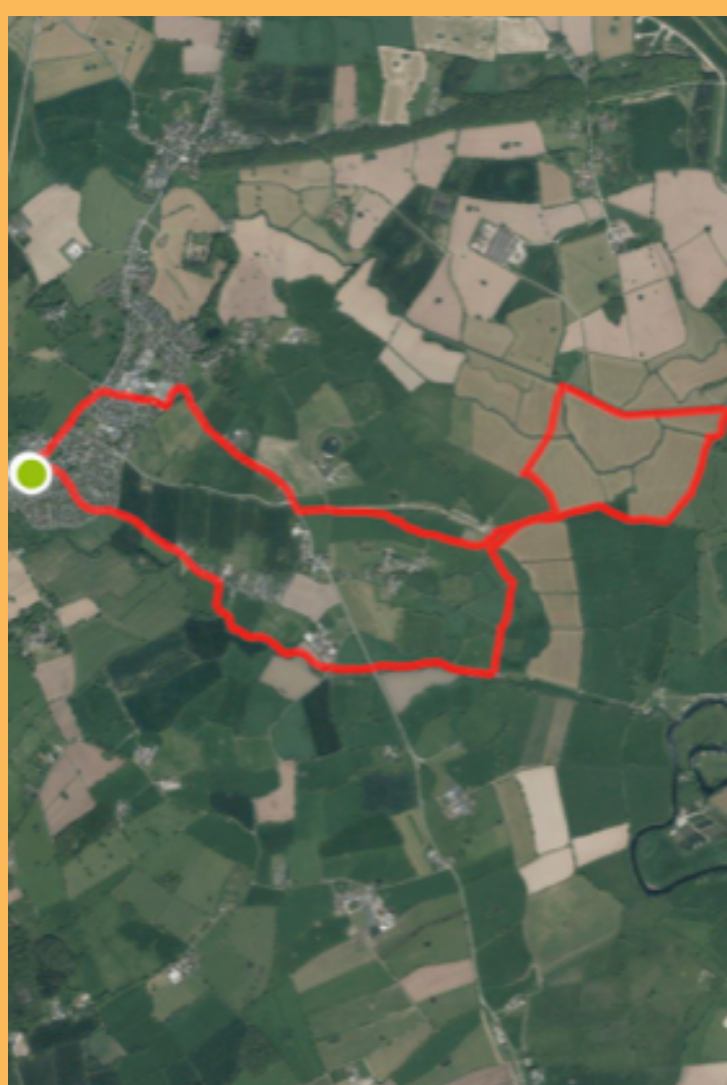
On Harwoods Lane you will pass on your left the old water pump (see picture above). Follow the lane until you reach the housing estate. Keep left on the pavement until you reach the junction with the park in front of you. Turn left.







You will now have reached the starting point of your walk.



The picture to the left is an overview of our walk.

## Tee's & See's

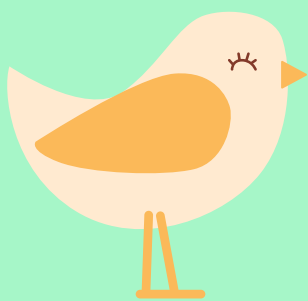
Always be aware that public footpaths cross fields that may contain cattle and you may need to alter your route to avoid them. Dogs should always be on leads in these areas in particular.

Go to Wrexham Council's web page detailed below to see a live map of all of our public footpaths and make up your own route around our village or change your journey if a path isn't available at that time! ;

[http://www.wrexham.gov.uk/english/leisure\\_tourism/prow/definitive\\_map.htm](http://www.wrexham.gov.uk/english/leisure_tourism/prow/definitive_map.htm)

The use of our public footpaths is a great opportunity to explore the local area, if you see any Stiles that need repairing or areas that are blocked please let Wrexham Council know to keep these pathways open;

[https://www.wrexham.gov.uk/english/leisure\\_tourism/prow/reporting\\_problems.cfm](https://www.wrexham.gov.uk/english/leisure_tourism/prow/reporting_problems.cfm)



*Compiled by Rossett Community Council & theguestbooks.com*

*Walked By: Cllr Allan Parrington  
07.06.2020*

