

Rossett Rambles

Explore Rossett, Burton, Lavister & Trevalyn

2



Rossett - Broad Oaks - Lavister - Darland - Rossett
3.6 Miles
1hr 45min

Full of variation, this walk takes you accross open fields, accross a former Golf course, around Darland Pond and along the River Alyn.

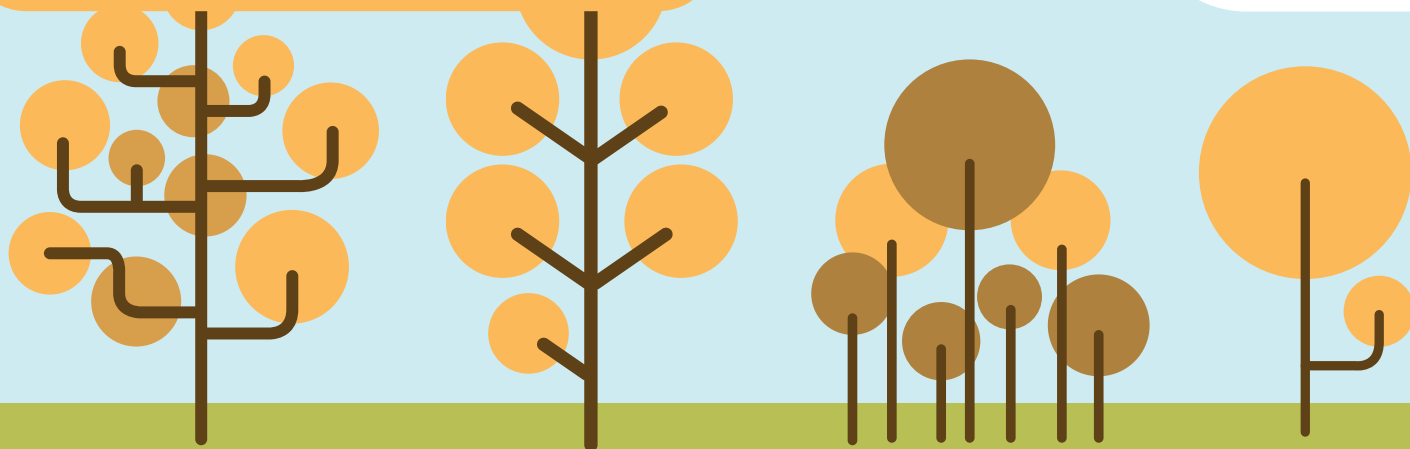


This walk starts from the centre of Rossett, at the park. From the flower beds opposite the Coop shop cross the main Chester Road. To the left of Alyn Cottage you will see a public footpath sign (Footpath ALL-14 indicated by the bird)

The picture on the right shows the first stile, climb over here and follow the path to the next stile and enter the first field see below;

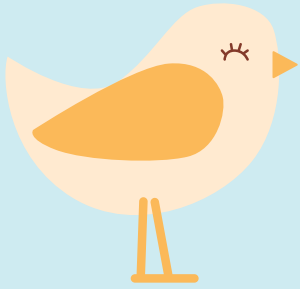


The footpath (now BUR-4) runs directly ahead across the field until you get to another stile and another field beyond.





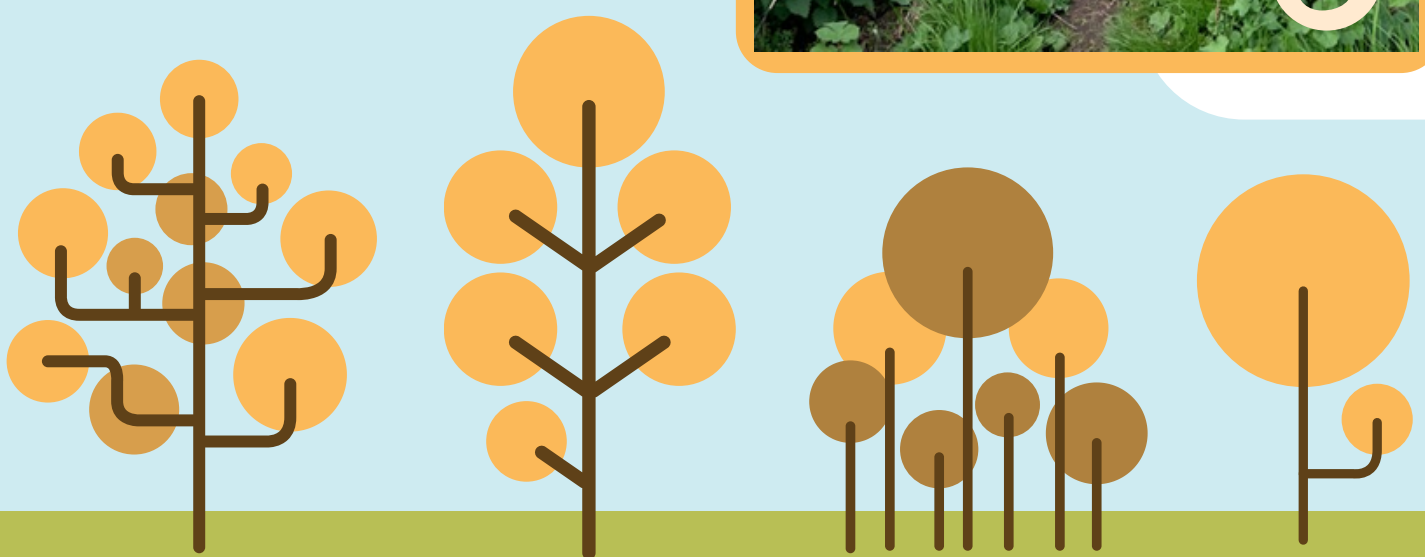
Cross the stile and you are now back on footpath ALL-14. You must keep to the left of this field. Walk across the field and you will reach another stile, just before the main Wrexham to Chester railway, cross this stile, if you carry on there is a footbridge across the railway but not the subsequent by-pass so do not cross here.



Instead turn immediately right to follow the narrow fenced path that runs between the railway and the field on your right, this is footpath BUR-2.



This footpath runs along several fields all the way until the end of the fenced section that ends with the Stile (see picture on the right).



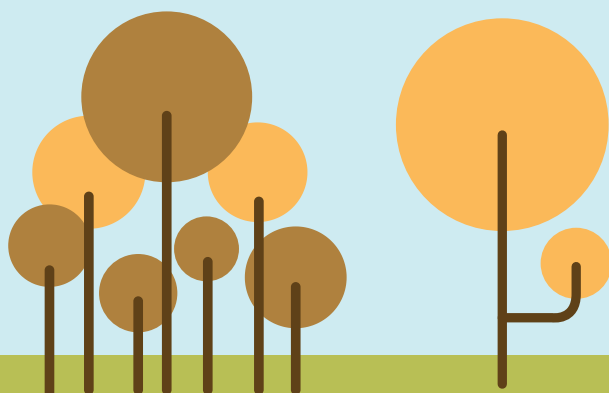
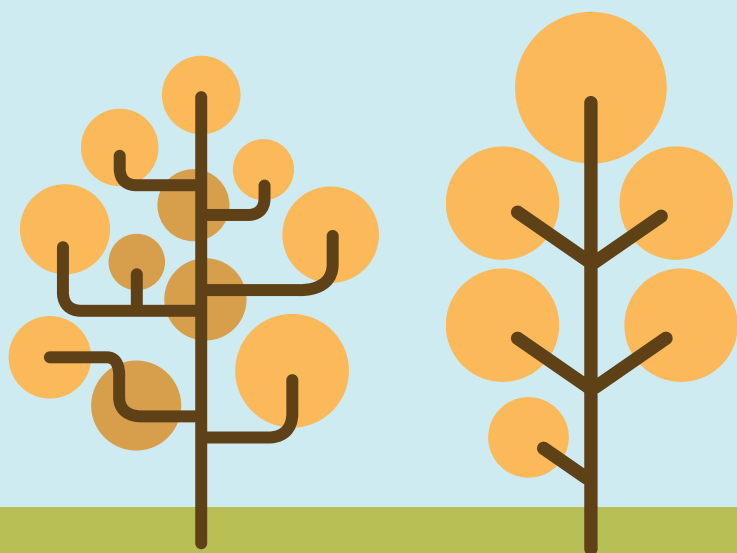


After climbing the stile, follow footpath BUR-3 which forks off to the right and head for the stile marked with a bird on the left hand picture.

Cross through the stile onto Cobblers Lane, then cross the road and over the stone wall immediately ahead using the stone steps into the field.

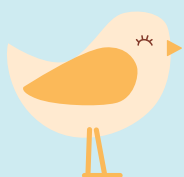


Walk straight ahead across the field, the footpath (BUR-1) continues to a gate (see photo on left) and into the next field.





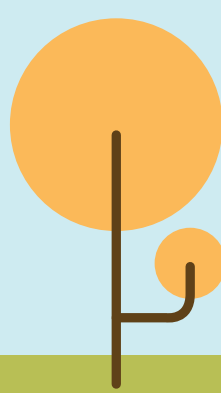
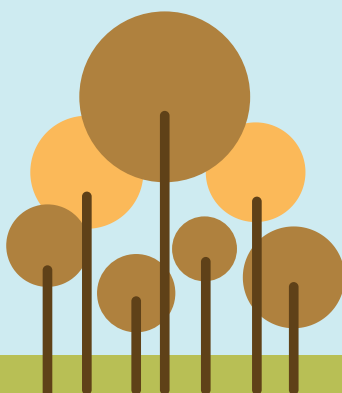
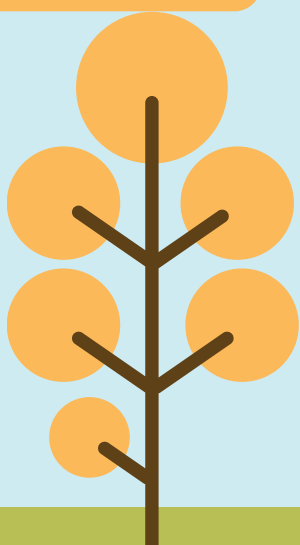
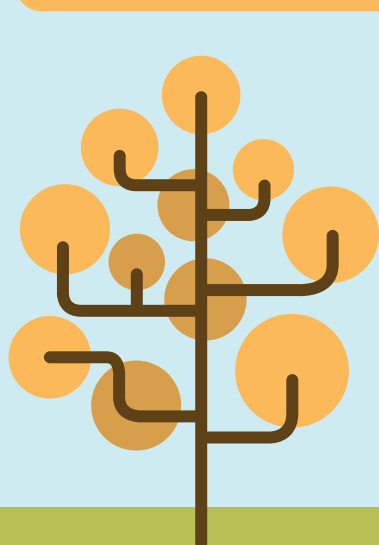
Follow the well trodden path with the spire of Pulford Church ahead of you, the path bends to the right, continue until you come to a gate onto the busy Chester Road. Cross the road (watch for traffic) towards the former Lavister Golf Course.



Enter through the gate, follow the road for a short distance and then turn right and follow the footpath signs across the field.



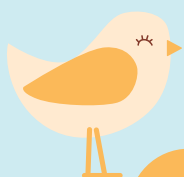
This footpath (ALL-16) crosses the old golf course towards Darland Woods.



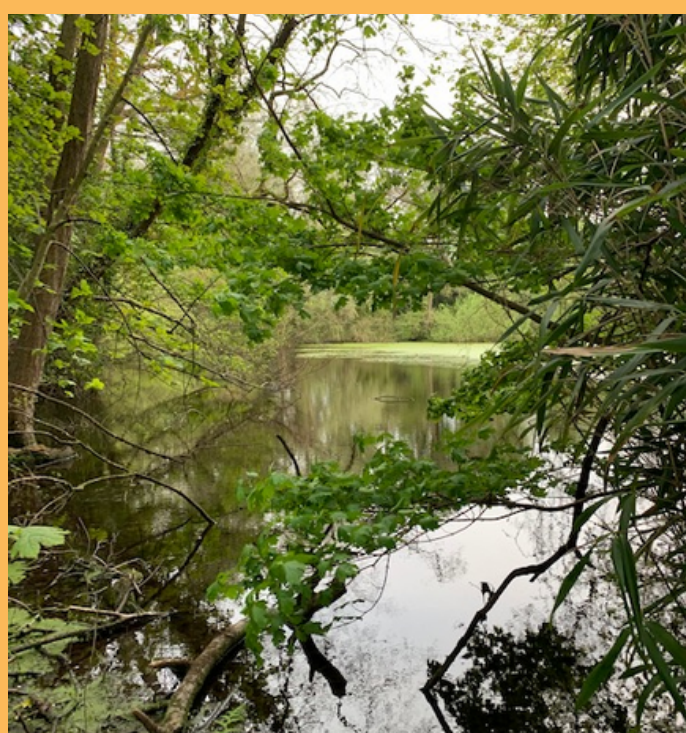


Darland Woods & Pond

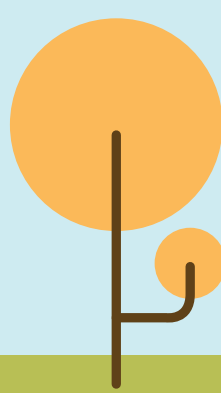
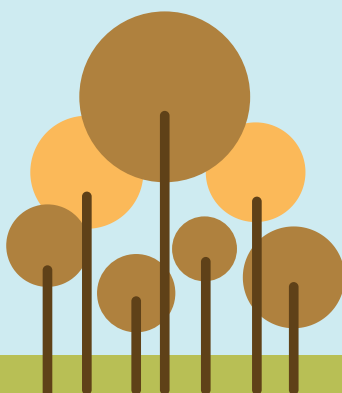
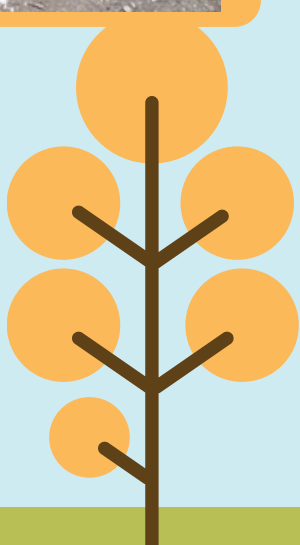
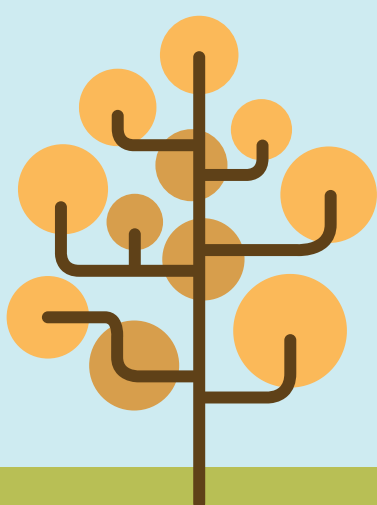
At the end of the field keep to the left of the gate, cross the track and take the path into Darland Woods. See the bird marker in the picture to the left.



This footpath winds through the woods, taking you around Darland Pond. The woods are often full of wild garlic & bluebells depending upon the time of year



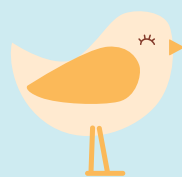
Exit the woods on to Darland Lane directly opposite the entrance to Darland Hall.



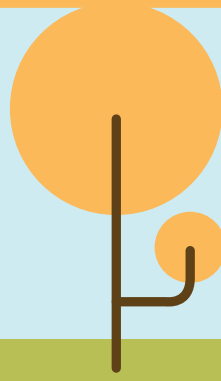
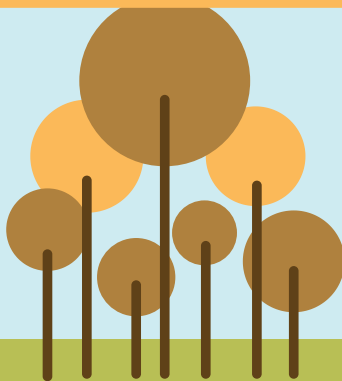
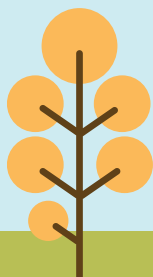
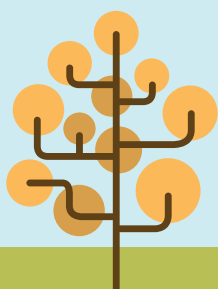


Turn right past the entrance to Pippin Lane, until you reach the junction with Gamford Lane.

Turn left and follow the road, make sure you keep to the right, there is no pavement and the road is narrow. Follow the road bearing left, ignore the footpath on the right towards Darland School. Walk past the Darland School playing fields until you reach another footpath sign on your right (bird marker).



Cross the stile and keep to the right of the field, this is public footpath ALL-20, follow the hedge until it bears off to your right, stay on the path directly ahead. This takes you across the field to a stile where you exit onto Rossett Road.





Rossett Road can be busy so please be aware of the traffic. Turn right for a short distance until you see a footpath sign on the left. Cross the road carefully and through the gate into the field picking up footpath ALL-21.



19



20



21

Cross the field until you emerge onto Harwood's Lane Turn right until you reach the housing estate. Just at the junction with Alyn Drive there is a gate, enter the field here.



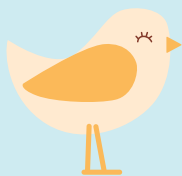
22

Follow the well marked path across the field in front of you heading towards the river Alyn.



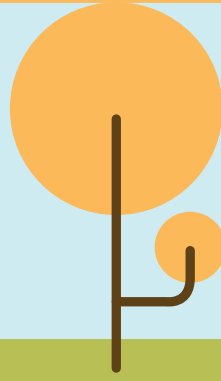
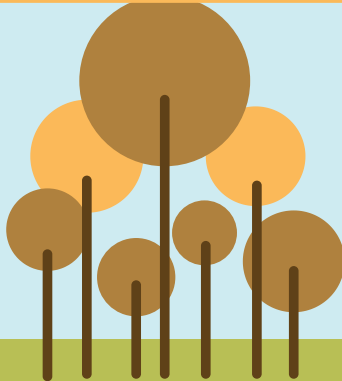
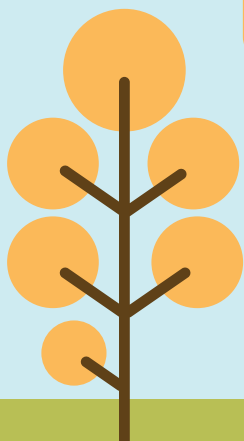
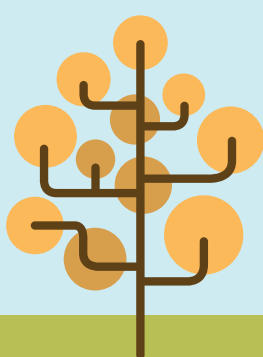


The path circles the field to the right alongside the riverbank Watch out for the entrance to Pebble Beach, a lovely spot for a rest or a paddle especially if you have a 4 legged friend Watch out for the kingfishers, herons and ducks which are often spotted here.



When out walking it is always advisable to keep dogs on leads. Here in particular whilst there is no cattle there are some strong river currents and the field is popular with dog walkers.

The footpath continues alongside the river until you emerge back on to Alyn Drive, turn left following the road around the bend.





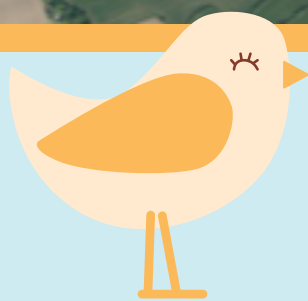
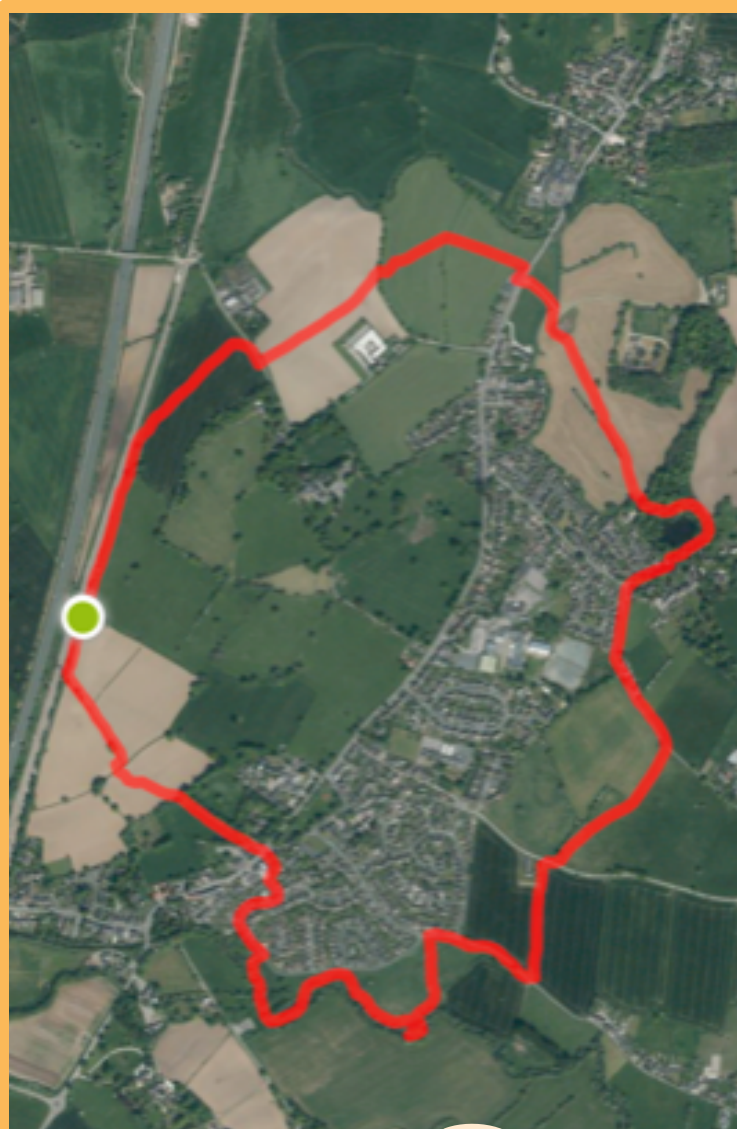
On your left, just past Williams Way, take the footpath on the left indicated by the bird marker



This footpath brings you back to the park, and the start of the walk.



The picture to the left is an overview of our walk.



Tee's & See's

Always be aware that public footpaths cross fields that may contain cattle and you may need to alter your route to avoid them. Dogs should always be on leads in these areas in particular.

Go to Wrexham Council's web page detailed below to see a live map of all of our public footpaths and make up your own route around our village or change your journey if a path isn't available at that time! ;

http://www.wrexham.gov.uk/english/leisure_tourism/prow/definitive_map.htm

The use of our public footpaths is a great opportunity to explore the local area, if you see any Stiles that need repairing or areas that are blocked please let Wrexham Council know to keep these pathways open;

https://www.wrexham.gov.uk/english/leisure_tourism/prow/reporting_problems.cfm



Compiled by Rossett Community Council & theguestbooks.com

Walked By: Cllr Allan Parrington
01.06.2020

