

Rossett Rambles

1



Explore Rossett, Burton, Lavister & Trevalyn

Burton - Croes Howell - Burton

2.6 Miles

1 Hr 15m

This walk takes in some great local landmarks and whilst offering an elevated view it isn't a struggle to get there with gentle inclines and easy access all the way.

Driving into Burton (having turned right from the B5102) follow the road until you come to a hairpin bend, carefully cross to the road that runs towards the underpass ahead.

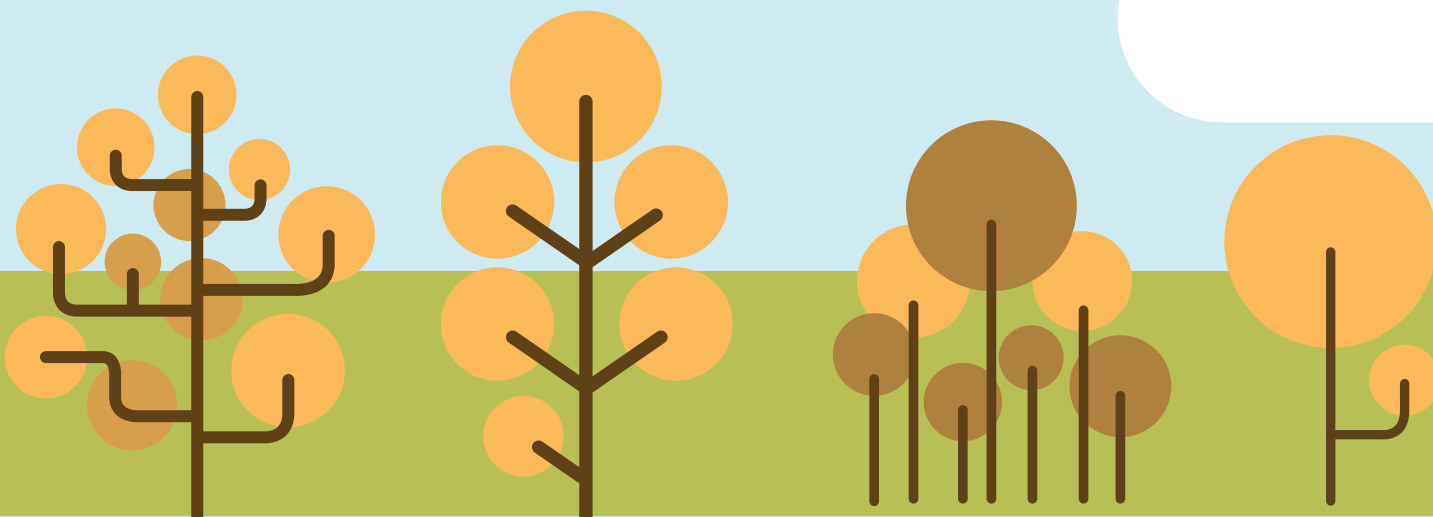
After the hairpin bend you can park along the pavement in front of the underpass. Follow the road straight to your left you will reach the first footpath (BUR-37) which will appear on your right after a few hundred yards. You will pass the weir on the river Alyn to your left.

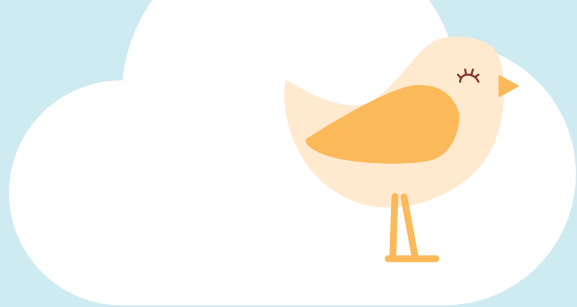


Turning into the field, keep to the left at all times and be aware of any livestock in the next two field's.



Keep to the left hand side and make your way across the two fields into the woodland ahead





You will head into a pathway that snakes across the side of the Stonewalls housing estate. To your left you will have a view of Stoneleigh with Strathalyn in the background..

Once you reach the end, you will notice the stone stile and the now mostly hidden Victorian 'kissing gate'



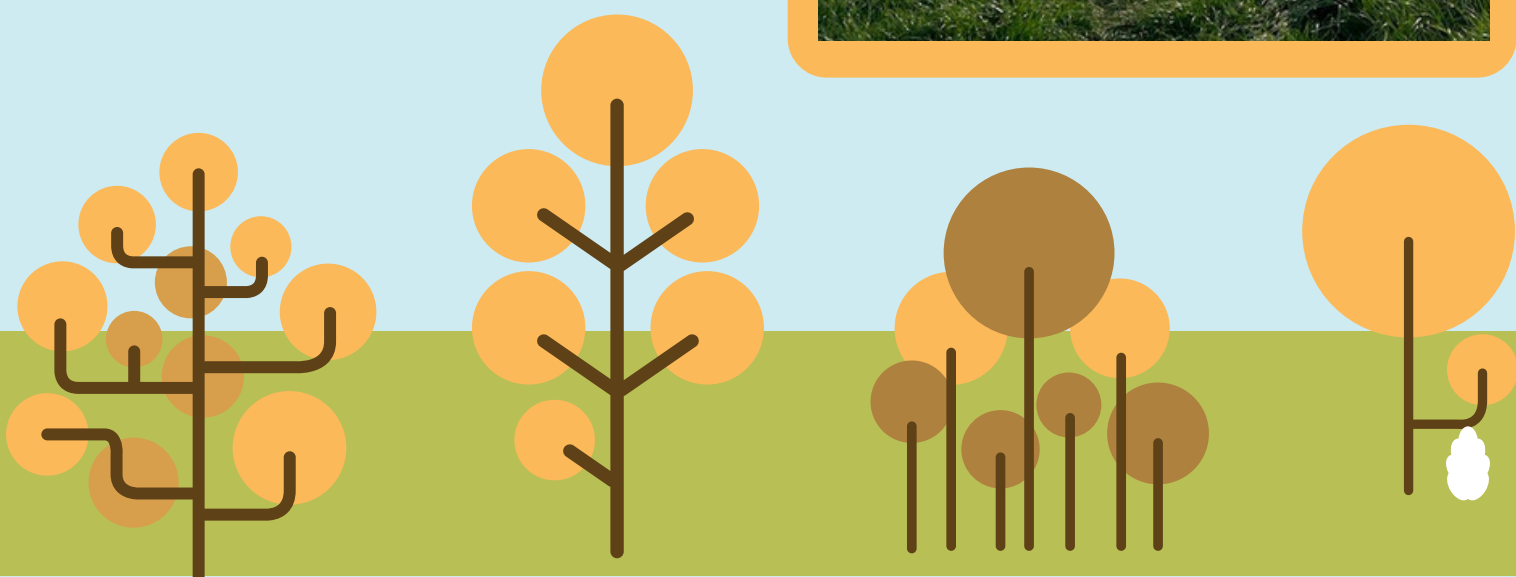
Once you reach the end of the path you will emerge onto Rosemary Lane. Cross straight over the road to the narrow path at the right of the house opposite, and onto footpath (BUR-10).

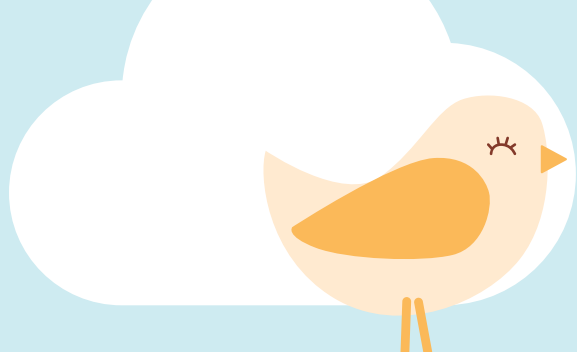
Following this footpath you will emerge into open fields.

Note the public footpath runs through the centre of the field, continue across until you reach the first gate.



Once through the first field (6) carry on straight along the left hand side of the subsequent field until the hedgerow runs out and turns left.





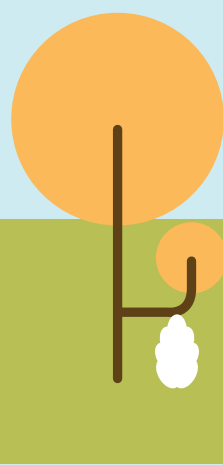
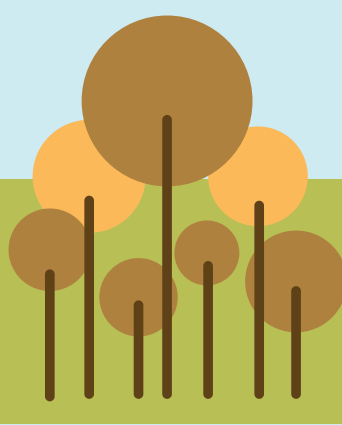
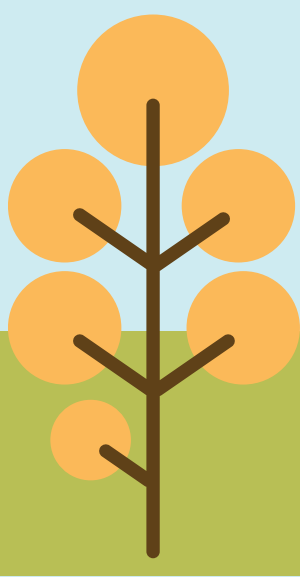
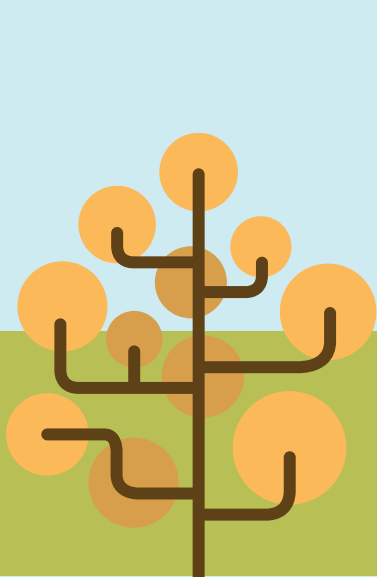
Bear immediately left along the hedgerow (Footpath BUR-13) and follow it into the corner of the field where you will find a gate that opens onto Rosemary Lane. Cross straight over and enter the field in front of you.



This footpath (BUR-14) follows the left hand side of the field and takes you through one field until you reach a track belonging to Fields Farm, cross this and continue on footpath BUR-14 until you get to the top of the first field.



At the top of the field, before you cross the Stile, don't forget to turn around and admire the view!





Immediately turn left onto Higher Lane and walk towards the end of the road.

Just before you reach the main Rossett to Llay road, take in the view of the Cheshire plain.



The beautiful Pulford Church spire along with many others is visible from here.



Walk down Croes Howell hill back towards Rossett & Burton.

On your right you will pass the Grade 2 listed Mount Alyn Lodge, one of the entrances to the Mount Alyn estate the now since demolished country seat of Alexander Balfour, a famous philanthropist who founded Edge Hill University in Lancashire, and was a benefactor of the village helping found the temperance Cocoa Rooms on station road.



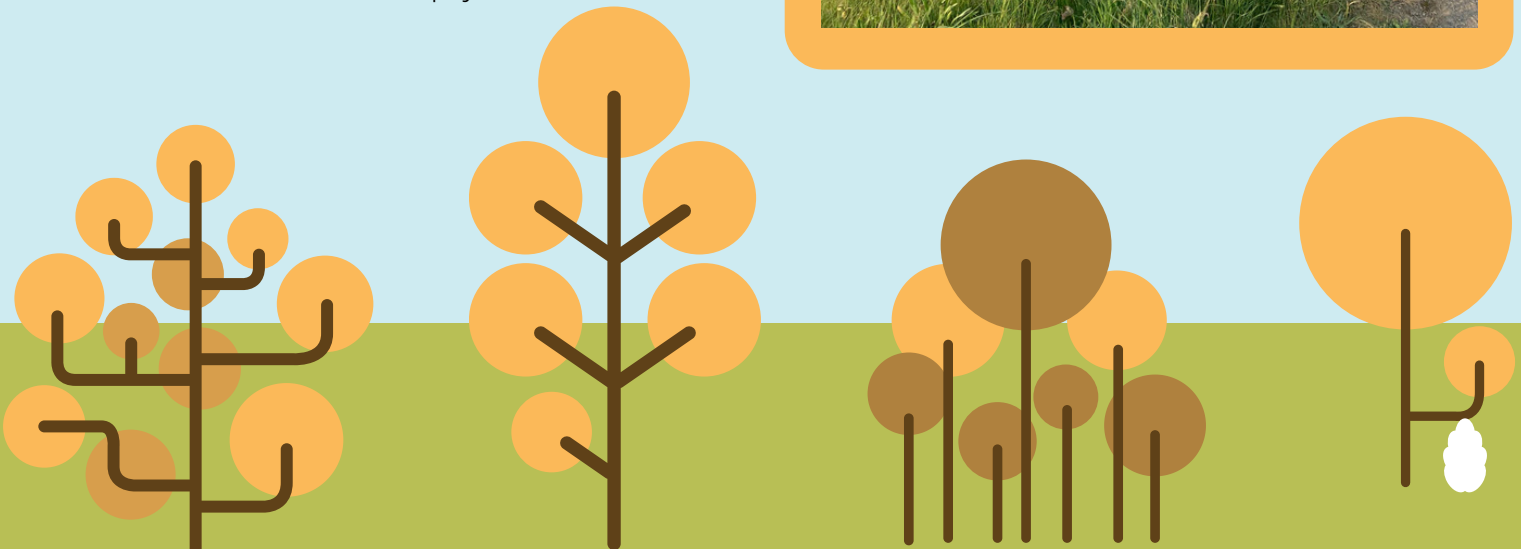
Turn left into Burton Road and back to the start, there is a path to the river bank by where we started on the hairpin bend which is a great way to end the walk and empty the flask!

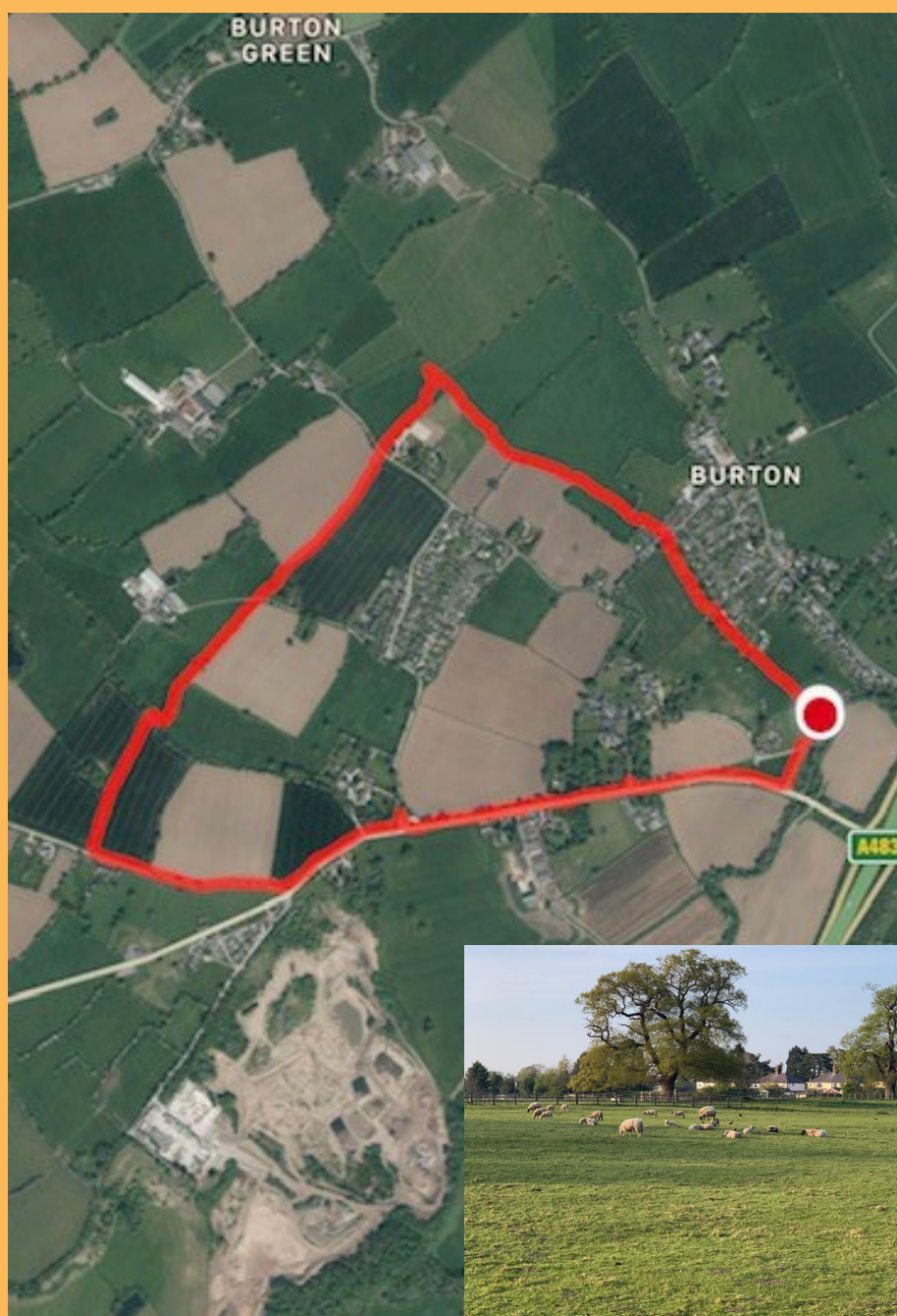
You will then reach the Burton War Memorial.

There is a public bench here, a great spot for a breather.

The beautiful ironwork was constructed and installed by Peter Cade a former resident of Burton and community councillor.

Once revitalised it is time for the easy part; down hill!





Aerial view of this walk around Burton & Croes Howell



Tee's & See's

Always be aware that public footpaths cross fields that may contain cattle and you may need to alter your route to avoid them. Dogs should always be on leads in these areas in particular.

Go to Wrexham Council's web page detailed below to see a live map of all of our public footpaths and make up your own route around our village or change your journey if a path isn't available at that time! ;

http://www.wrexham.gov.uk/english/leisure_tourism/prow/defaultive_map.htm

The use of our public footpaths is a great opportunity to explore the local area, if you see any Stiles that need repairing or areas that are blocked please let Wrexham Council know to keep these pathways open;

https://www.wrexham.gov.uk/english/leisure_tourism/prow/reporting_problems.cfm



*Compiled by
Rossett Community Council*

Walked: 12/04/2020

By: Cllr Allan Parrington

